

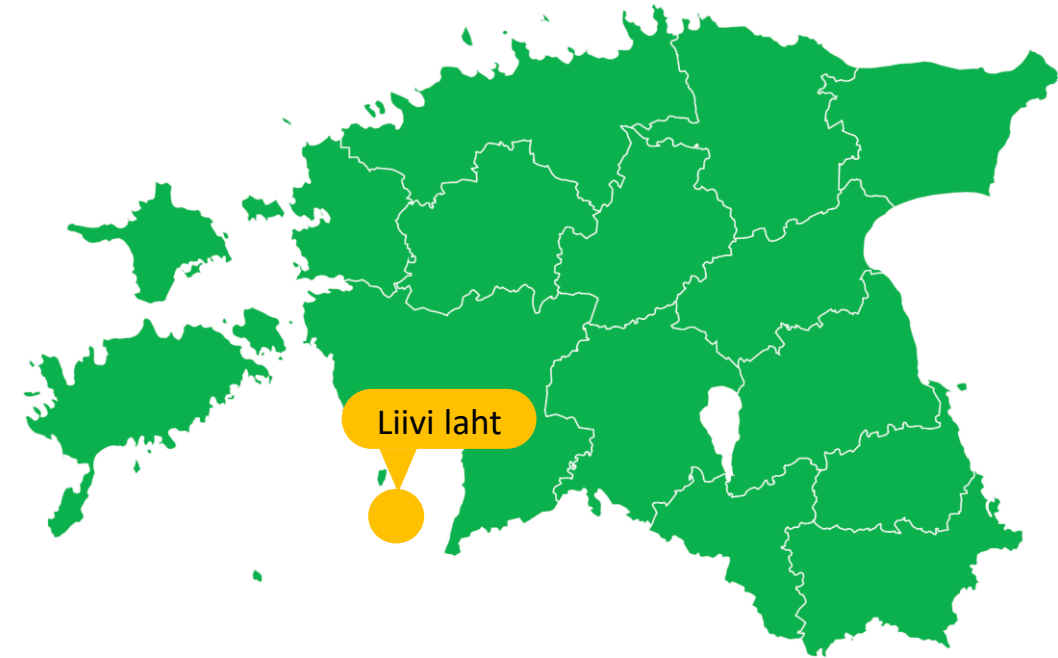
Karmo Kõrvek

Enefit Green

CEF – Energy project:
GORIO

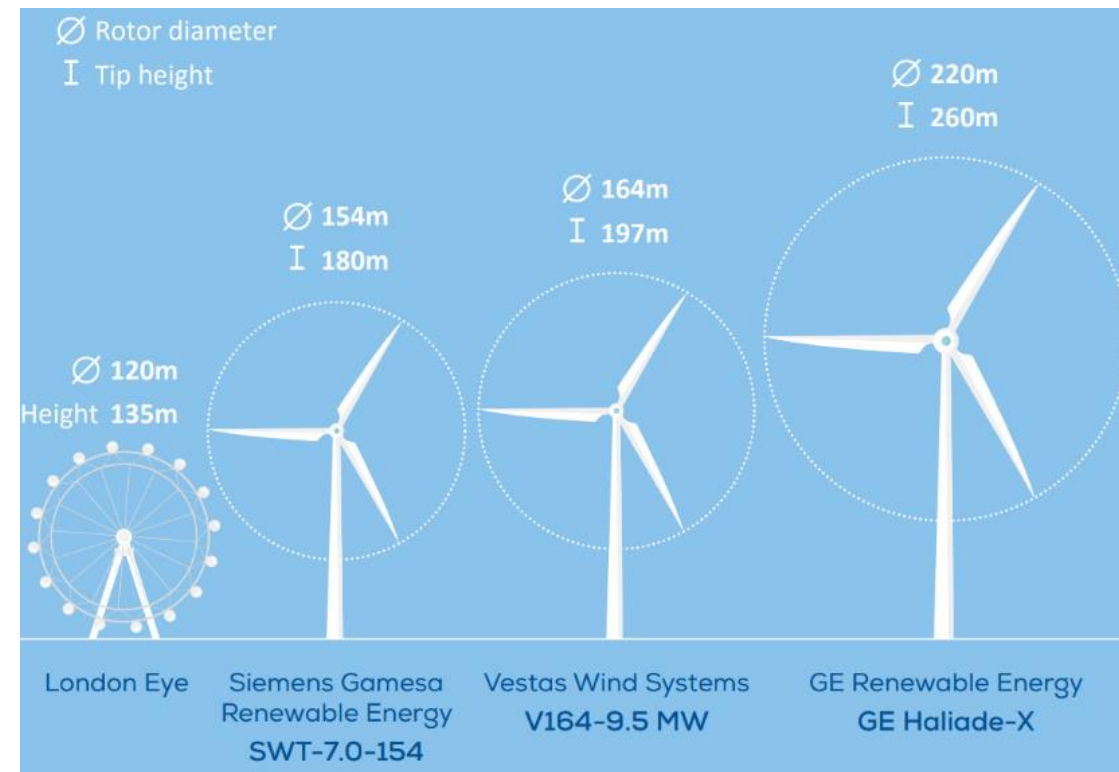
Conceptual Engineering Study (Pre-FEED) for the offshore wind farm in the Gulf of Riga

- contains conceptual engineering design for Liivi Offshore wind farm with overall capacity of 1 GW
- provides a comprehensive overview of the technical and financial aspects of the proposed offshore wind farm
- provides technical input to the ongoing environmental impact assessment activities



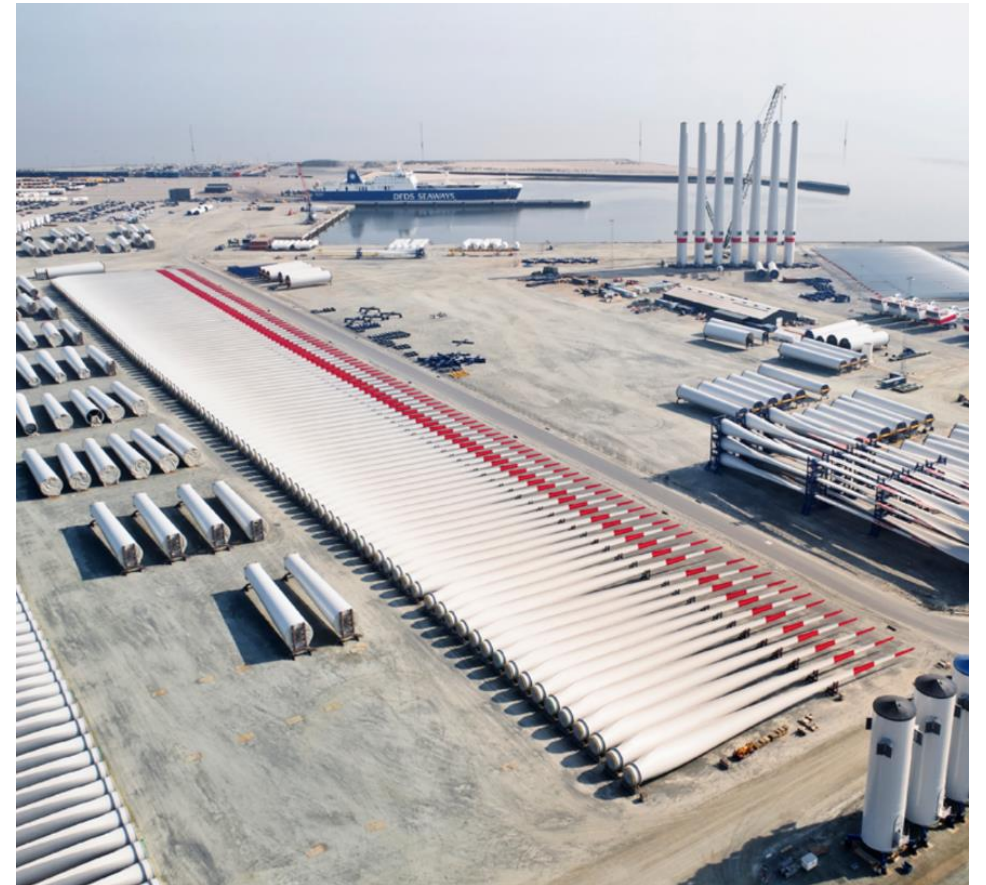
Conceptual Engineering Study (Pre-FEED) for the offshore wind farm in the Gulf of Riga

- provides knowledge and recommendations based on existing market constraints and supply chain opportunities
- outlines the specific tasks and milestones that need attention in order to move forward with the project
- provides information on risks
- **Budget** : 148 086 EUR with EU funding rate 50%
- **Duration** 05/2022 – 03/2023



Challenges for the wind farm development

- Overheating offshore wind market/cost increase
- Supply chain constraints
- Planning & permitting process
- Grid connection possibilities
- Environmental constraints
- Resistance in local communities



Port of Esbjerg - Christer Holte