



# ***LIFE-Clean Energy Transition*** *the policy context*

*Claudia Canevari, DG ENER*

*Head of Unit, ENER.B2 - Energy Efficiency*

# Policy context

**New climate target 2030: -55%**  
**Fit455 package: revision of**  
**EED, EPBD, RED...**



**Recovery after COVID-19 crisis:**  
**Next Generation EU funds + MFF**

# Importance of the EED revision

Energy efficiency is a pre-condition for all decarbonisation scenarios.

It delivers multiple additional benefits: lower energy bills, reduced energy poverty, jobs creation and growth, better air quality, health and wellbeing for citizens.

Key elements of the proposal are:

- Binding EU-level energy efficiency target, supported by indicative national contributions based on benchmarks and a formula
- **Legal basis for the 'Energy Efficiency First' principle**
- Strengthened annual energy savings obligation in end use
- Stronger exemplary role of the public sector
- Increased focus on alleviating energy poverty

# Recovery Plan for Europe

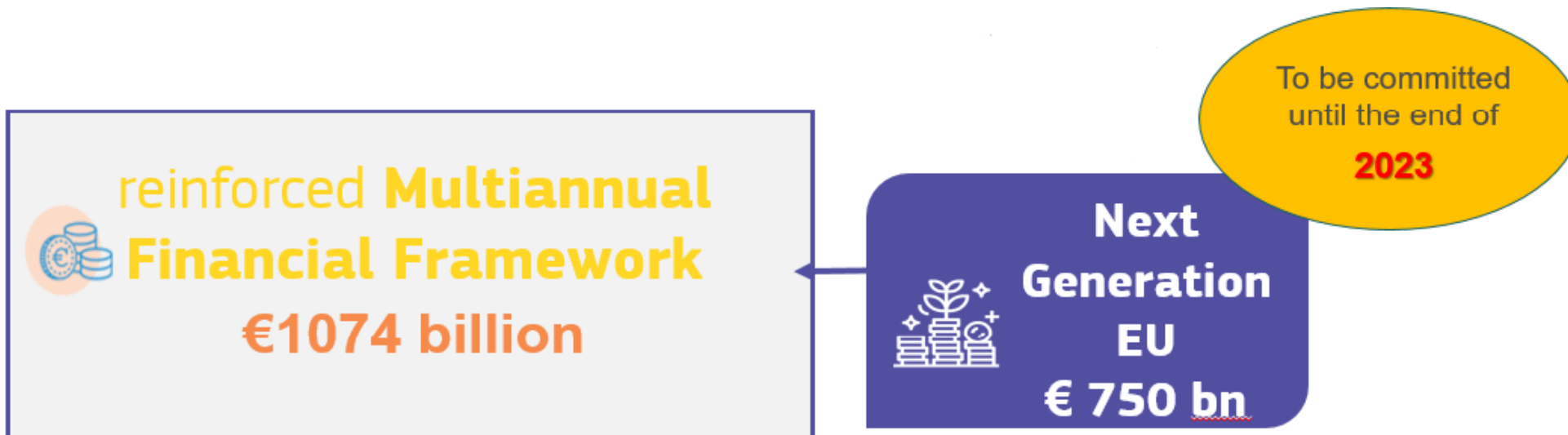
a unique opportunity towards a climate-neutral economy

The European Commission proposed a **major recovery plan** using a powerful EU budget to deliver a more sustainable Europe.

Out of the total **1.8 trillion euro** (Next Generation EU + MFF 2021-2027) **30% (€550 bn)** have been earmarked for climate actions.



<https://audiovisual.ec.europa.eu:443/en/video/I-191551?&lg=OR>





# Recovery funds- green and digital priorities

## RECOVERY AND RESILIENCE FACILITY

### Twin Transitions: Green and Digital

Each recovery and resilience plan will have to include

a minimum of

**37 %**  
of expenditure

for  
**CLIMATE**  
investments  
and reforms

a minimum of

**20 %**  
of expenditure

to foster the  
**DIGITAL**  
transition

The Commission will assess national plans against these targets.  
The first assessments show significant investments in energy efficiency  
and in buildings renovation.



# EU funding landscape to support clean energy

## To co-finance Direct Investments

- **Recovery** and Resilient Facility
- **Cohesion** Policy Funds (ERDF, ESF)
- **Just Transition** Mechanism - JTF

## To leverage Private Investments

(Financial Instruments, Technical Assistance)

- **EIB- InvestEU** (Sustainable Infrastructure window and SMEs window and **the ELENA Facility**)

## To support Research & Innovation

### Horizon Europe

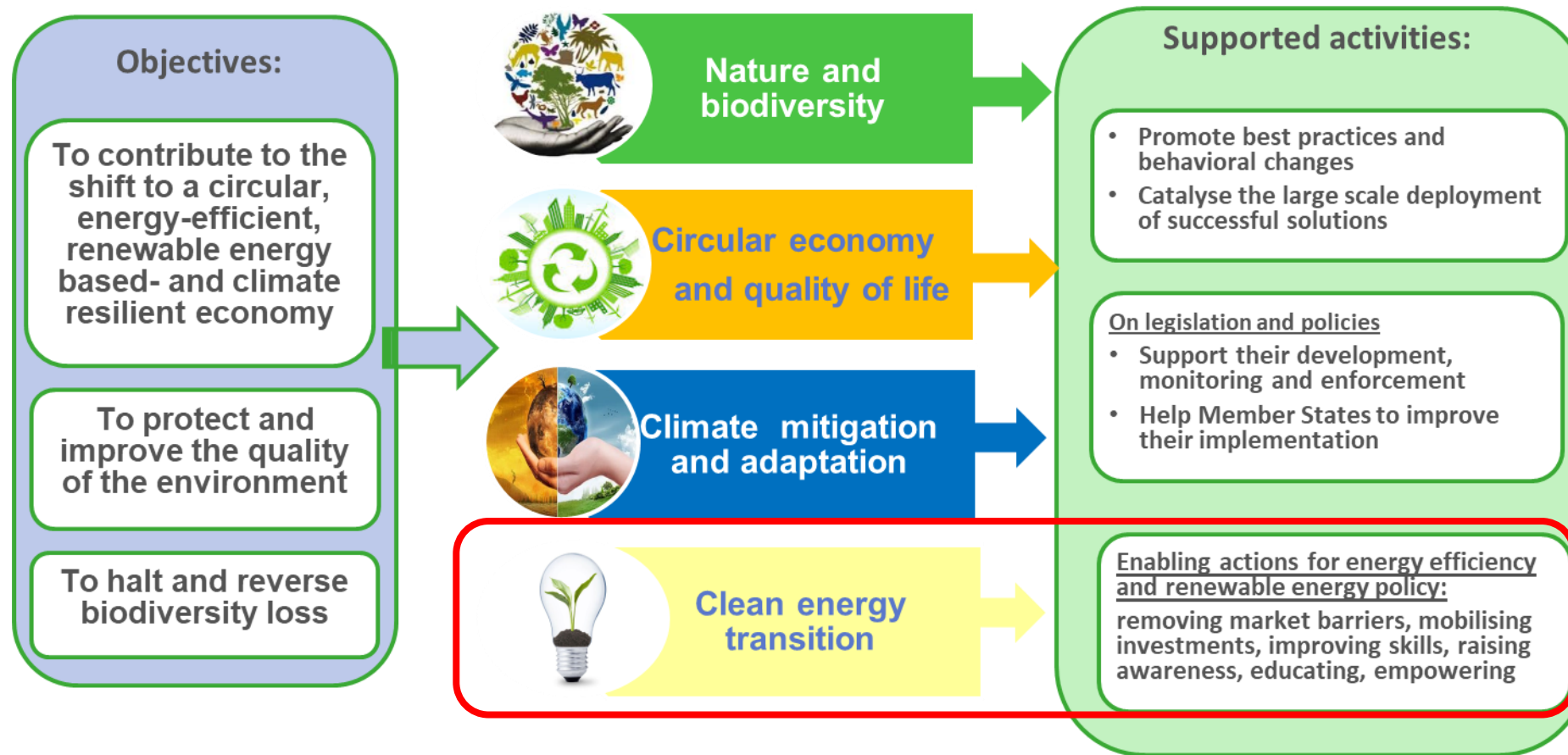
Cluster 5 -  
Destination 4 :  
Buildings and Industry

## To address Market Barriers

- **LIFE** – Clean Energy Transition & Climate Mitigation and Adaptation
- **LIFE** – Circular Economy & Quality of Life

# LIFE- Clean Energy Transition

- ✓ Continuation of “market uptake” Coordination and Support Actions from Horizon 2020- Energy Efficiency
- ✓ 7 years budget of almost €1 bn



Thank you for your attention