

# The socio-economic assessment

# CBA Requirement

- The requirement for socio economic assessment has been streamlined in this programming period to take account of the added value of the tool for each priority
- There are now three levels of granularity of information
  - Full CBA
  - Simplified CBA
  - For some categories no CBA is required
- No more Cost Effectiveness Analysis (CEA)

# Full CBA

- As for the previous programming period, “full CBA” is composed of:
  - a standalone text document, with a minimum length of 20 pages, and
  - the CBA Cash Flow template filled in to present the results of the CBA in a harmonized format.

# Simplified CBA

- The simplification consists in
  - dropping the requirement for the standalone text document, and
  - replacing the CBA Cash Flow template with the simplified CBA excel calculator
- The simplified CBA calculator requires fewer inputs to produce the output indicators by automating the calculation of externalities and the monetisation of time saving.
- When a simplified CBA is required applicants may always submit a full CBA if they wish so (but then they have to respect those requirements).

# Simplified CBA calculator

1/2

- It is important to configure correctly the calculator for CEF Transport calls.
- In this respect, please make sure to choose the following 3 settings in the general assumption sheet (“G.Asm”).

	Cell	Appearance
Select “Transport sector”	F11	Sector <input type="text" value="Transport"/>
Select “Cost Benefit Analysis”	F13	Economic appraisal method <input type="text" value="Cost-benefit analysis"/>
Activate “Financial analysis”	F75	Do you want to calculate the financial performance indicators? <input type="button" value="Yes"/>

# Simplified CBA calculator

2/2

- The tool comes as “Excel Macro-Enabled Workbook (\*.xlsm)” file but the evaluation environment applies limitations to this file format.
- Before submitting the Simplified CBA calculator, Applicants must save it as “Excel Workbook (\*.xlsx)”. This will remove the Visual Basic project (i.e. the code of the Macros)

File name: Simplified CBA project XXXX.xlsx

Save as type: Excel Workbook (\*.xlsx)

\* The threshold applies to eligible costs

# CBA requirement by priority

Work programme “Objectives”	Priorities	Requirement
<b>6.1 Projects related to the efficient, interconnected, interoperable and multimodal networks</b>		
	Railways	Full CBA / Simplified < 10 m€ *
	Inland waterways and inland ports	Full CBA / Simplified < 10 m€ *
	Maritime ports	Full CBA / Simplified < 10 m€ *
	Roads, rail-road terminals, connections to airports and multimodal logistics platforms	Full CBA / Simplified < 10 m€ *
<b>6.2 Projects relating to smart, interoperable, sustainable, multimodal, inclusive, accessible, safe and secure mobility</b>		
<b>6.2.1 Projects related to smart and interoperable mobility</b>	ERTMS	No CBA
	ITS	No CBA
	RIS	No CBA
	SESAR common projects	No CBA
	SESAR other projects	No CBA
	Transport interoperability	No CBA
<b>6.2.2 Projects related to sustainable and multimodal mobility</b>	Alternative fuels infrastructure	Implementing Partner: No CBA Others: Simplified CBA
	Motorways of the Seas	Full CBA / Simplified < 10 m€ *
	Multimodal passenger hubs	Full CBA / Simplified < 10 m€ *
	Reduction of rail freight noise	No CBA
<b>6.2.3 Projects related to safe and secure mobility</b>	Safe and secure parking infrastructure	Full CBA / Simplified < 10 m€ *
	Road safety	Full CBA / Simplified < 10 m€ *
	Projects improving transport infrastructure resilience	Full CBA / Simplified < 10 m€ *
	External border checks	Full CBA / Simplified < 10 m€ *
<b>6.3 Military mobility</b>		
	Military mobility	No CBA

# Grandfathering

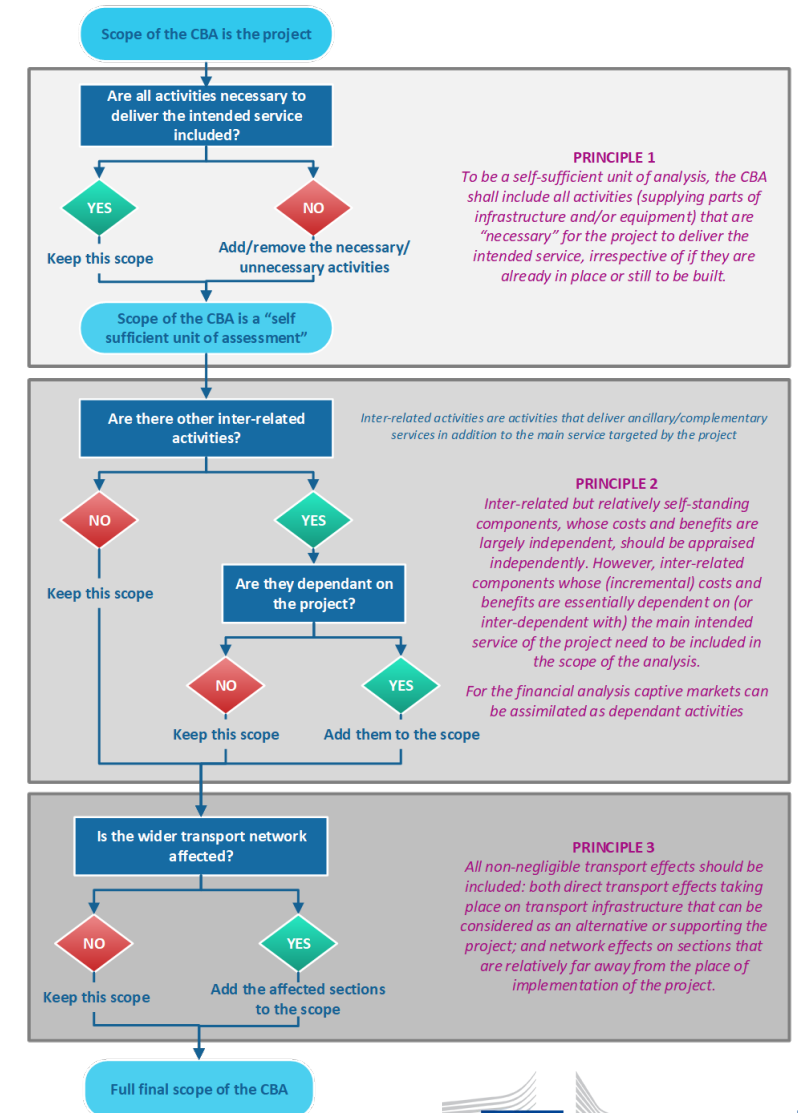
- Applications relating to a new phase of a project under construction and already supported by CEF may re-submit the CBA originally submitted if
  - the new project was already included in the scope of the original CBA
  - no significant changes have occurred (nature, scale and scope of the project or its context/background) that may impair the value of the original CBA (e.g. new competition, technological breakthrough, new normative constraint, social conditions, uses and customs).
- If applicants decide to re-submit the original CBA they must confirm that these two conditions are met and explain their arguments in Application **Form part B section 4.2** also indicating to reference/code of the original proposal.



# Note on Scope of Socio-Economic Assessment

Three principal steps to undertake in order to determine the correct scope of the CBA:

- All "necessary" components are added (unnecessary ones are removed)
- All inter-related dependant activities are added
- Effects on the wider transport network are added



# Guidance on Economic Appraisal

- All information on CBA is gathered in a single document

*Guidance on Economic Appraisal  
for CEF Transport projects*

- If you still have doubts send us questions to:

[CINEA-CEF-TRANSPORT-CALLS@ec.europa.eu](mailto:CINEA-CEF-TRANSPORT-CALLS@ec.europa.eu)

# Keep in touch - CINEA



[cinea.ec.europa.eu/](http://cinea.ec.europa.eu/)



[@CINEA\\_EU](https://twitter.com/CINEA_EU)



[CINEA - European Climate, Infrastructure and Environment Executive Agency](#)



[CINEATube](#)