

Drafting an invertebrate LIFE project proposal

Example LIFE SOS Crau Grasshopper

Adaptive habitat management, breeding and reintroduction programme

Dr. Gustavo Becerra-Jurado

CINEA, LIFE Invertebrate Coordinator

Dr. Lisbeth Zechner MSc.

Conservatoire d'espaces naturels Provence-Alpes-Côte d'Azur

EU Life Info Days 2023 - 26 April 2023



LIFE20 NAT/FR/000080

Contents

1. Proposal approaches
2. Baseline: knowledge on the target species
3. LIFE SOS Crau Grasshopper
4. Partners and stakeholders – international cooperation
5. Tips for a good quality application



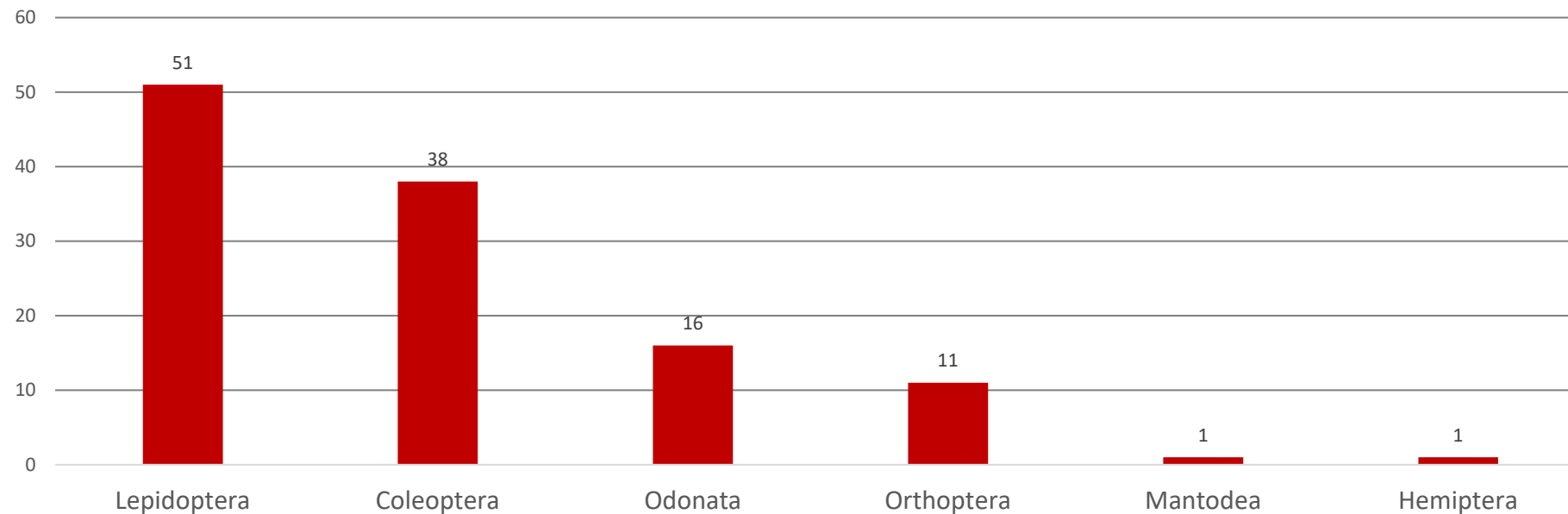
1. Proposal approaches

How to get LIFE funds for insect species? **A) Species approach** **B) Habitat approach**

A) Species approach (including some pollinators e.g. Lepidoptera)

→ EU Habitats Directive: species in unfavourable and declining conservation status (**U1-**), in particular in unfavourable-bad and declining conservation status (**U2-**) both at the EU- and national biogeographical region(s) level, where the project is taking place.

More than **100 potential species of insects**

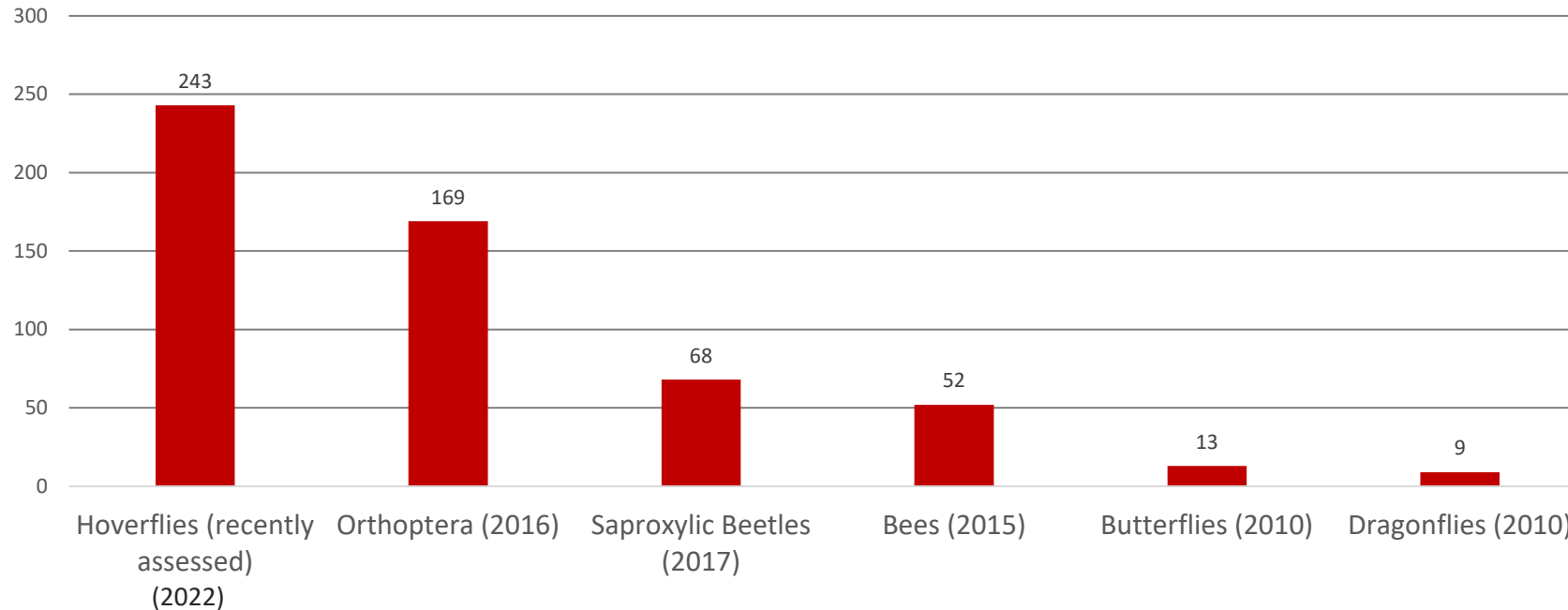


1. Proposal approaches

A) Species approach (including many pollinators): high number of species that can be targeted

➔ **Species NOT covered by the Habitats Directive:** species in higher extinction risk categories (**EN** or **CR**) in **EU red lists**, or **(Pan) European/Global IUCN red lists** for Outermost Regions and Overseas Countries and Territories, respectively.

More than **500** species of mostly **additional insect species!!!**
Many groups can now be targeted



European Red List of Moths coming soon

1. Proposal approaches

B) Habitat restoration approach + monitoring of insect species

- EU Habitats Directive: habitats in unfavorable and declining conservation status (**U1-**), in particular in unfavorable-bad and declining conservation status (**U2-**) both at the EU- and national biogeographical region(s) level, where the project is taking place.

More than **200 potential** non-marine **habitats for insects**

- European Red List: habitats species in higher extinction risk categories (**EN** or **CR**)

More than **25 potential** non-marine **habitats for insects**



1. Proposal approaches

Habitat approach: LIFE SOS Crau Grasshopper

- « **Coussoul** » Unique dry grassland ecosystem in the South of France

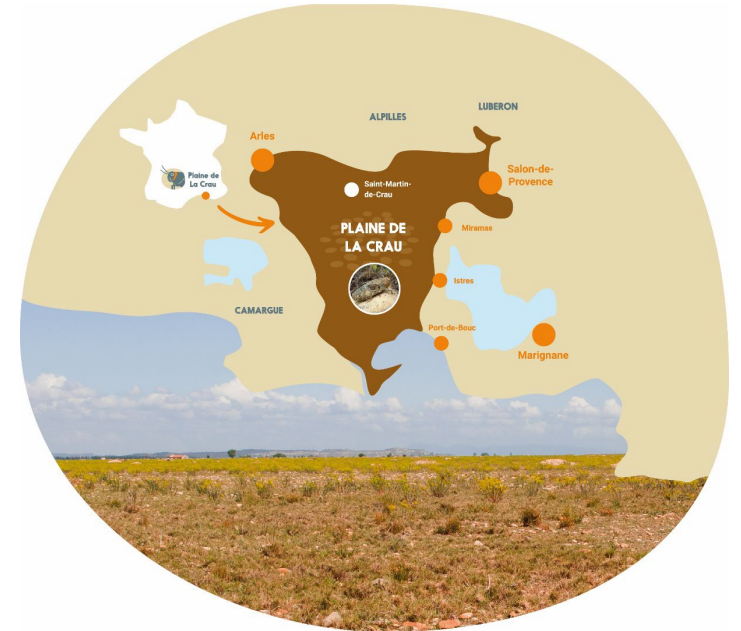
6220* Pseudo-steppe with grasses and annuals of the Thero-Brachypodietea: **U2-**

[EUNIS -Factsheet for Pseudo-steppe with grasses and annuals of the Thero-Brachypodietea \(europa.eu\)](https://eunis.europa.eu/fr/factsheet/6220)



National Nature Reserve NNR Coussouls de Crau, managed by CEN PACA and the Chamber of agriculture 13: **7,000 ha**

Natura 2000 SCI/SAC FR9301595 and SPA FR9310064: 43,143 ha



STILL multiples threats: destruction, constructions, pesticides, pollution, change of grazing practices, climate change, etc.

- 1789 : 600 km²

- 1958 : 200 km²

- 2020 : env. 100 km²

2008 - 2020: loss of 1,000 ha!



1. Proposal approaches

Species approach (chosen): LIFE SOS Crau Grasshopper

- Endemic species in the Crau plain (Southern France)
- Strong decline for the last 20-30 years → **loss of more than 90 % of known distribution**

2016 : European and Global Red Lists (IUCN): CR "critically endangered"



© Y. Toutain—CEN PACA



The screenshot shows the IUCN Red List entry for the Crau Plain Grasshopper (*Prionotropis rhodanica*). The status is listed as Critically Endangered (CR). The last assessment was on 20 April 2016. The geographic range is shown on a map of Southern France, and the population trend is indicated as decreasing.



LIFE multiannual work programme for 2018-2020

PROJECT TOPIC :

Targeting threatened species or habitats that are not included in the annexes of the Habitats Directive but have a status of 'endangered' or worse in the European species or habitats Red Lists or, for those species not covered by the European Red Lists, in the IUCN Red List.

2. Baseline: knowledge on target species

Example: LIFE SOS Crau Grasshopper

Decline of the species observed since 1990 - further research & conservation activities

- From 1995: first studies on the species (Antoine Foucart, Eric Sardet, Sylvain Piry et al.)
- From 2009 Laurent Tatin (CEN PACA): start of extensive research and international cooperation
- 2014 Workshop & Conservation Strategy - IUCN SSC Grasshopper Specialist Group, IUCN SSC Conservation Planning Sub-Committee & CEN PACA
- From 2015 Cathy Gibault (Thoiry zoo), Axel Hochkirch, Linda Bröder et al. (Trier University, IUCN)
 - Breeding of Crau Plain Grasshopper (ex situ / in situ)
 - CMR: estimation of population size of the last 3 sub-populations (Bröder et al. 2020)
 - Micro-habitat analysis (Bröder et al. 2019)
 - Survey of potential predation by camera traps (Bröder et al., submitt.)



3. LIFE SOS Crau Grasshopper – objectives & actions

1. Increase the area of favourable habitat: habitat restoration and adaptation of grazing practices

Preparatory actions to improve knowledge on the links between grazing, vegetation and habitat of *P. rhodanica* and to prepare concrete actions: **habitat restoration, adaptive grazing**; monitoring the impact of grazing on vegetation

2. Reduce threats such as predation by insectivorous gregarious bird species

Study of insectivorous gregarious birds: *Bubulcus ibis*, corvidae, *Falco naumanni*, **adaptation of breeding facilities**; monitoring of bird species

3. Improve captive breeding of *P. rhodanica* and start reintroduction/translocation programme

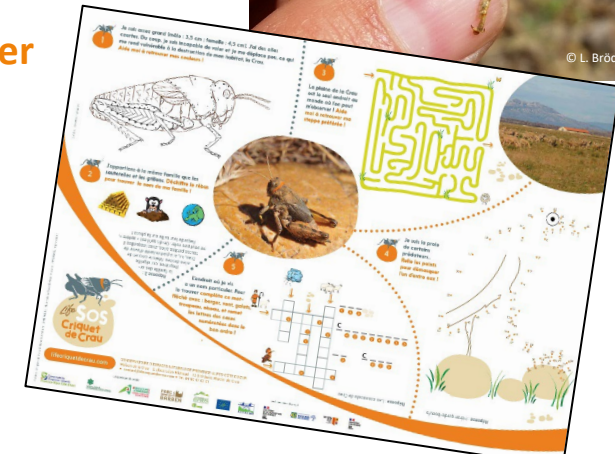
Reintroduction strategy: LIFE & IUCN guidelines

Breeding & reintroduction: **3 ex situ and 2 in situ breeding stations. 2-3 reintroduction sites**

Monitoring of breeding programme and **population monitoring**

4. Communicate, educate and raise awareness – dissemination of results, experience transfer (international cooperation)

➔ Improving the conservation status of the species





3. LIFE SOS Crau Grasshopper – beneficiaries & co-financing

Coordinating beneficiary: Conservatoire d'espaces naturels Provence-Alpes-Côte d'Azur CEN PACA

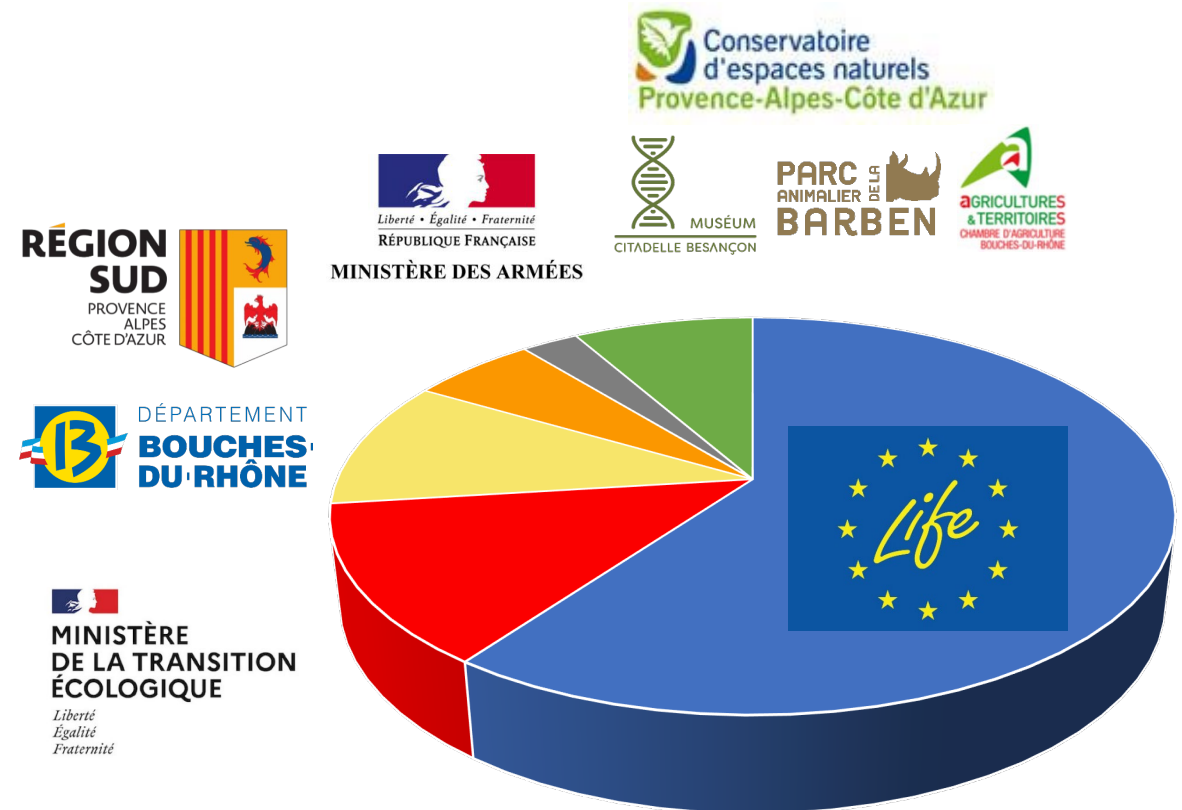
Associated beneficiaries:

- Chamber of agriculture (CA13) → grazing management
- La Barben zoo – grasshopper breeding
- Besançon zoo – grasshopper breeding

Duration: 01/09/2021 – 30/09/2025

Total budget: € 1,919,745

European co-financing: 60 % (now **up to 75 %!**)



4. Partners and stakeholders – international cooperation

Example: LIFE SOS Crau Grasshopper

National and local authorities

Local stakeholders:

- Landowner: private (**BMW**), public (MINARM, CD13, CDL)
- Sheep breeders and shepherds
- Manager of protected areas (Natura 2000, nature reserves, etc.)
- NGOs (LPO France, LPO PACA, etc.)

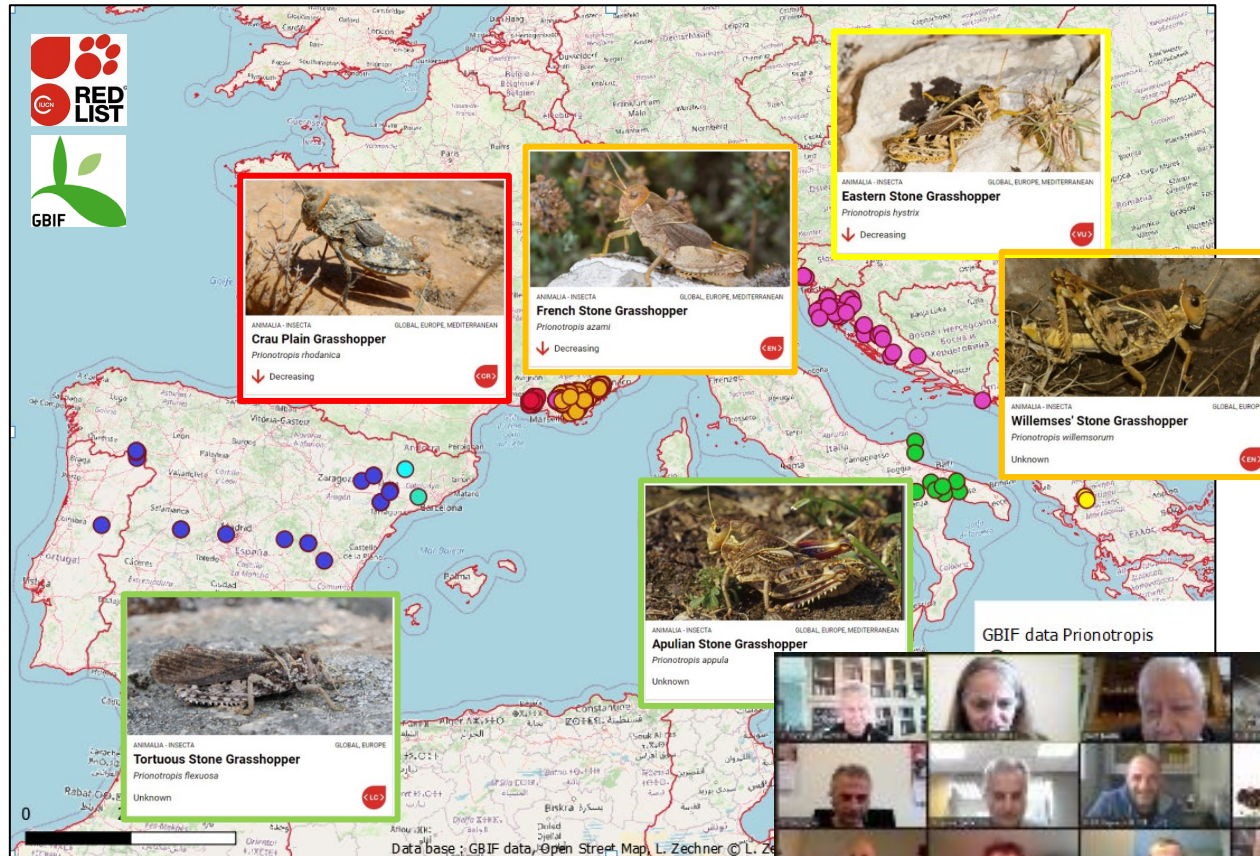
National and international experts (scientific committee)

- National Council for Nature Conservation, CIRAD/CBGP
- Universities: Avignon, Aix-Marseille, Montpellier, Trier
- **IUCN SSC Grasshopper Specialist Group** and European grasshoppers specialists (*Prionotropis* expert group), Zoological Society of London
- European Association of Zoos and Aquaria - TAG/TITAG, Bristol Zoo Gardens

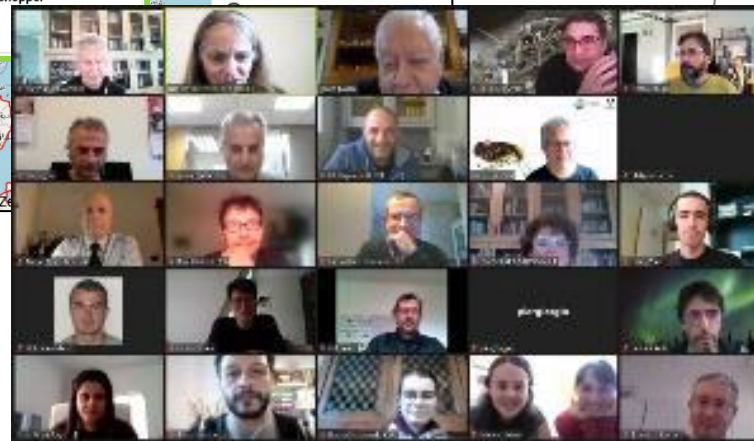


4. Partners and stakeholders – international cooperation

Example: LIFE SOS Crau Grasshopper



IUCN Red List of Threatened Species



2nd International *Prionotropis* conservation Symposium
Zoom-meeting, 23 March 2023, 4 pm CET
<https://uni-trier.zoom.us/j/81018821029?pwd=SktnOVp0OXI4bDF1Uk5lKzV0WEpCZz09>

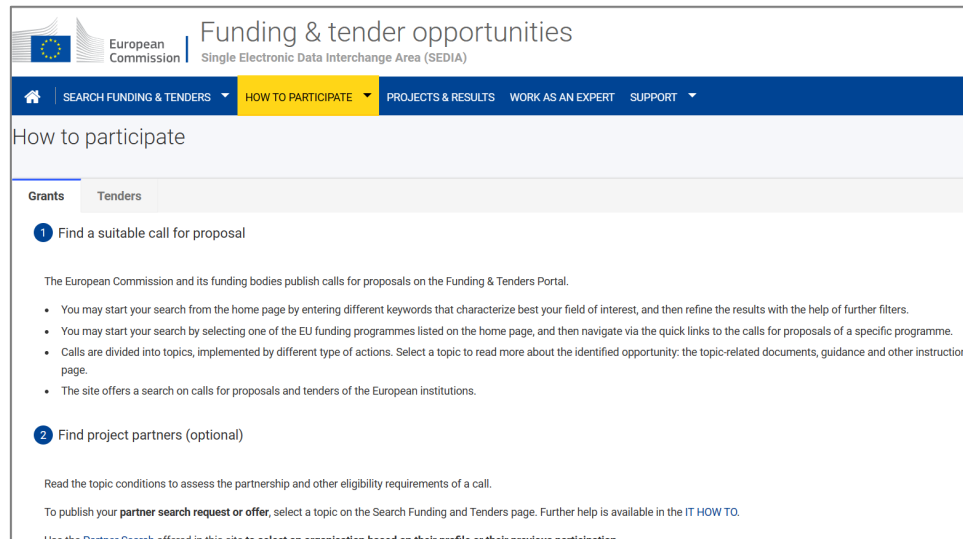
Programme

| | |
|---|---|
| Axel Hochkirch | Introduction |
| Beatriz Navarro Domínguez, Francisco Ruiz-Ruano, Ricardo Gómez, María Dolores López-León, Alberto Bellido-Chaves, Josep Maria Olmo-Vidal, Alexander Bugrov, Bruno Massa & Juan Pedro M. Camacho | Molecular phylogenetics of wing sexual dimorphism in the genus <i>Prionotropis</i> |
| Rocco Labadessa & Leonardo Ancillotto | <i>Prionotropis appula</i> : research perspectives and conservation issues |
| Maks Deranja, Karmela Adžić, Sebastian Cato, Lisbeth Zechner, Fran Rebrina, Dušan Jelić, Maja Mihajević, Marko Pavlović & Josip Skejko | Eastern stone grasshopper <i>Prionotropis hystrix</i> – biogeography, history of research, and conservation potential for the genus |
| Michèle Lemmonier-Darcemont & Christian Darcemont | Occurrence and threats of <i>Prionotropis willemsonum</i> – results of 2021 et 2022 |
| Nikos Filis & Vassiliki Kati | Ecology and conservation of the Endangered Willemse's Stone Grasshopper <i>Prionotropis willemsonum</i> in Greece |
| Cathy Gibault | Breeding of <i>Prionotropis rhodanica</i> since 2015 – successes and problems |
| Axel Hochkirch & Lisbeth Zechner | Translocation strategy for <i>Prionotropis rhodanica</i> and ongoing actions within the LIFE-project SOS Crau Grasshopper 2021-2025 |
| Discussion | |

Organised within the framework of the LIFE20 NAT/FR/000080 SOS Crau Grasshopper, action E4

5. Tips for a good quality application

- **Baseline – local level → IMPACT *1,5**
- **Consider the approach to be taken**
- **Take a close look at requirements for the 5 types of bonus points** (Synergies, Outmost Regions*, Uptake, Exceptional catalytic potential, transnationality)
- **Have all key stakeholders involved:** authorities, experts, NGOs, local stakeholders
- **Only applied research:** LIFE does NOT finance fundamental research projects. Limited in scope and only essential aspects.
- **Consider adopting an international approach** (e.g. in collaboration with **IUCN SSC Specialist Groups** for invertebrates)
- **Enough time for putting together the proposal:** baseline, cooperations, co-financing, etc...



1 Find a suitable call for proposal

The European Commission and its funding bodies publish calls for proposals on the Funding & Tenders Portal.

- You may start your search from the home page by entering different keywords that characterize best your field of interest, and then refine the results with the help of further filters.
- You may start your search by selecting one of the EU funding programmes listed on the home page, and then navigate via the quick links to the calls for proposals of a specific programme.
- Calls are divided into topics, implemented by different type of actions. Select a topic to read more about the identified opportunity: the topic-related documents, guidance and other instructions page.
- The site offers a search on calls for proposals and tenders of the European institutions.

2 Find project partners (optional)

Read the topic conditions to assess the partnership and other eligibility requirements of a call.

To publish your **partner search request or offer**, select a topic on the Search Funding and Tenders page. Further help is available in the [IT HOW TO](#).

Use the [Partner Search](#) offered in this site to select an organisation based on their profile or their previous participation.

Submission even if the proposal is not perfect → feedback → possibility to improve and to submit one year later

[How to participate \(europa.eu\)](https://ec.europa.eu/eas/eas-portal/)



Thank you for your attention!



Gustavo BECERRA-JURADO

LIFE Invertebrate coordinator
CINEA, European Commission

Lisbeth ZECHNER

Project manager "LIFE SOS Criquet de Crau"
CEN PACA - Pôle Bouches-du Rhône
Phone : +33 6 31 49 66 21
lisbeth.zechner@cen-paca.org

www.lifecriquetdecrau.com

LIFE20 NAT/FR/000080

