



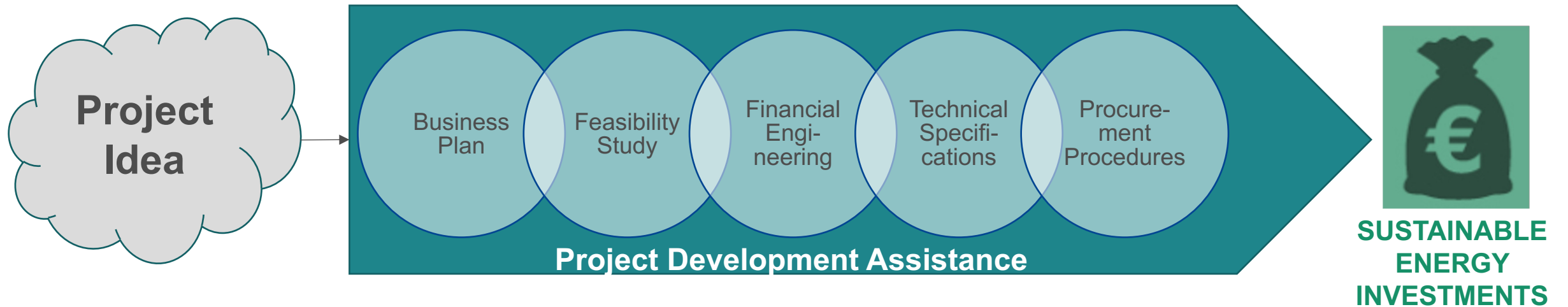
Project Development Assistance (PDA)

Project Development Assistance for sustainable energy investments



*Bjoern ZAPFEL – Programme Coordination Manager
LIFE Energy + LIFE Climate, CINEA*

Project Development Assistance



**Sustainable Energy Investment Pipeline -
Ambition and Scale**



Objectives

- Highly **ambitious sustainable energy project pipeline** (ready-to-finance / bankable projects)
- **Innovative approach** (financial and/or organisational)
 - Mobilization of **private finance** (incl. blending)
 - **Long-term and scalable financial instruments**
 - **Removal of legal and structural barriers** (administrative, market etc.)
 - **Structuring / aggregating** (pooling, bundling) investment projects (to reach critical size)
- Build **technical, economic and legal expertise** needed for project development and implementation
- High degree of **replicability**



Public and private project promoters

- Public authorities (incl. groupings)



- Public/private infrastructure operators and bodies



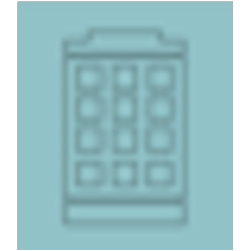
- Energy agencies



- Energy service companies



- Large property owners



- Retail chains



- Services



- Industry





Scope

Preparation and launch of investment pipelines of sustainable energy projects

- Organisational innovation and/or
- Financial engineering
- Removal of existing barriers

Scope

Demonstration of clear **showcase dimension** in delivering replicable solutions to accelerate sustainable energy investments across Europe:

➤ **Organisational innovation** in the mobilization of the investment programme, e.g.:

- Set-up of project development units;
- Establishment of efficient procurement procedures;
- Large-scale bundling and pooling of (mixed) assets etc.

AND/OR



Scope

- **Financial engineering** with focus on enhanced levels of private investment and improved combination of existing funds, including e.g.:
 - Energy Performance Contracting;
 - Dedicated financial instruments;
 - Blended funds;
 - Innovative on-bill / on-tax payment schemes;
 - Community-based financing schemes etc.



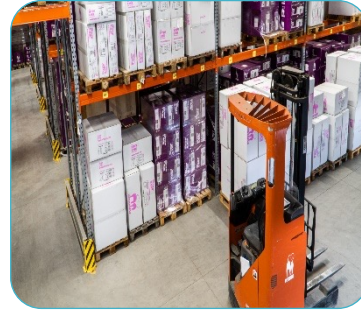
Scope

High ambition levels for energy savings and decarbonisation, e.g.:

- Deep renovation;
- Nearly zero-energy building (nZEB) or zero-emission building (ZEB) standards, incl. building-integrated renewables;
- Positive energy buildings or districts;
- Highly energy efficient infrastructure etc.



Target sectors



BUILDINGS

- Existing residential (incl. large social housing operators, district-level renovation approaches)
- Existing non-residential (commercial and public: e.g. offices, hospitals, academies, defence facilities)

DISTRICT HEATING / COOLING NETWORKS

Decarbonisation and modernization (incl. extension of existing networks fully based on low-temperature renewable energy or waste heat)

INFRA-STRUCTURE

Existing public infrastructure (e.g. water, wastewater, lighting)

BUSINESSES

Enhanced energy efficiency of industry and services (incl. SMEs e.g. via market facilitators)

RENEWABLES

Renewable energy production by energy communities or other citizen-led initiatives

MOBILITY

- Clean and energy efficient urban transport infrastructure
- Low emission urban mobility solutions
- Integration of smart recharging infrastructures in buildings



Facts and figures

- Tangible **investments** (incl. scalable financing solution) **launched before** the end of the action (signed work or investment contracts)!
- Leverage ratio: **1:15 / 1:10** for exclusive investments in residential buildings
- Contribution to **increased skills and capacity** to deliver further sustainable energy investments
- Proposals by **single applicant** or **applicants from a single eligible country** are eligible!
- **Expected project size: € 1 – 1.5 million**



Impacts + Indicators

Proposals should demonstrate how project results will contribute to expected impacts.

➤ Proposals should
(as relevant):

Common indicators

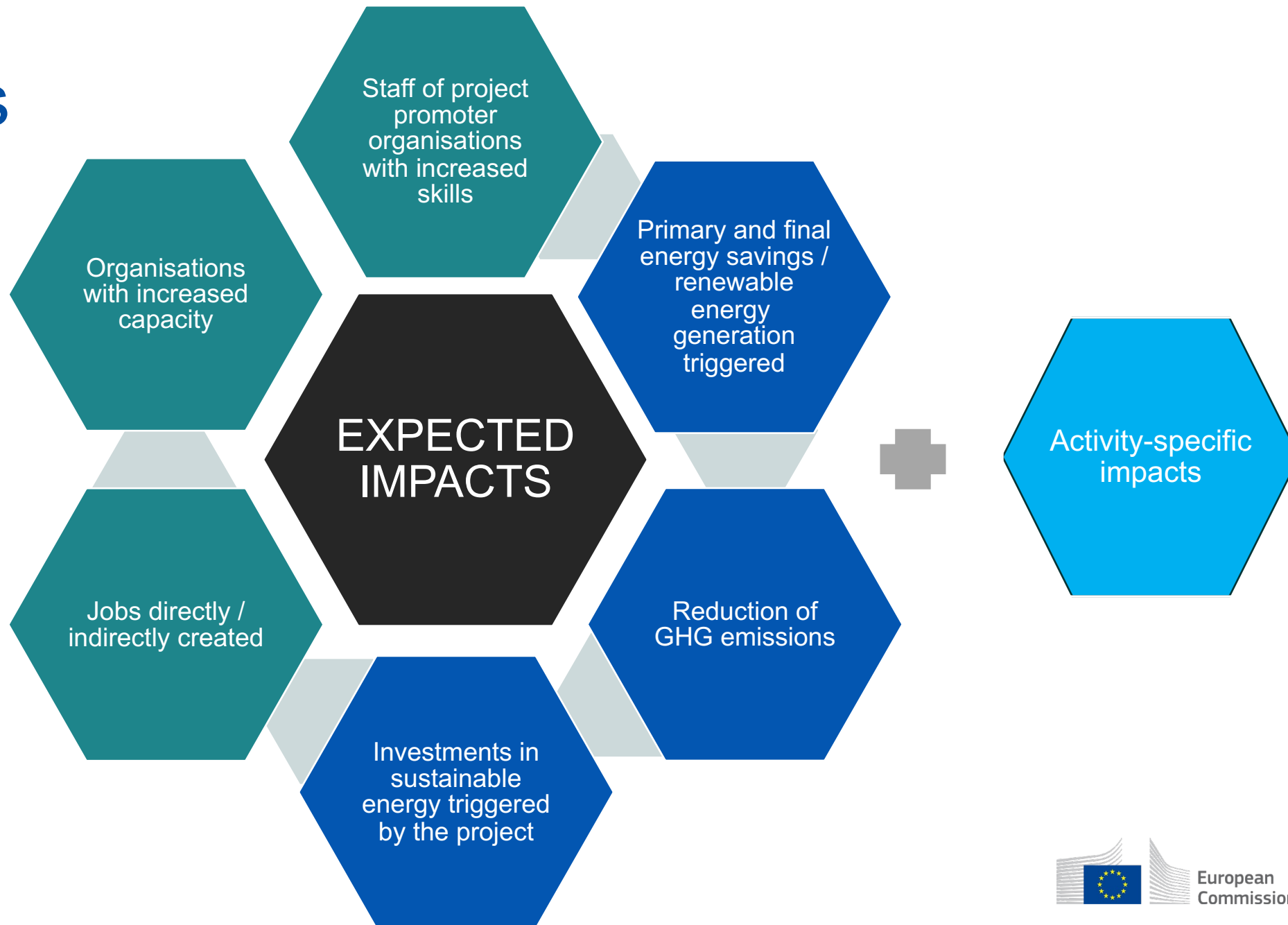
Topic-specific

Activity-specific

1. Address impacts related to **common indicators** for the LIFE-CET subprogramme
 2. Quantify impacts using the provided **topic-specific indicators**
 3. Propose additional indicators which are specific to the proposed activities (**activity-specific**)
- **Quantification** for project end/duration and for 5 years after project end
- Detailed analysis of **starting point**, definition of well-substantiated underlying **assumptions** and establishment of clear, causal **links between activity results and expected impacts**



Impacts



Key features of a successful PDA proposal

Adequate starting point

Identified targeted investments, market needs and barriers, commitment from key stakeholders

Clear concept

Steps to reach the planned investments, financial engineering (e.g. Energy Performance Contracting), procurement process



Solid impact

Credible quantitative and qualitative estimations (incl. sound baseline), realistic assumptions, clear focus on monitoring and reporting

Proven engagement

of final investment beneficiaries at proposal stage and during whole duration of the action



PEDIA - Promoting Energy Efficiency & Developing Innovative Approaches in Schools

- **Horizon 2020 PDA**
- Renovation of 25 schools to **nZEB standard** in Cyprus
- Urban, rural and mountainous **school buildings** all across Cyprus
- **EUR 20m dedicated fund** from EU Cohesion Fund
- **Bundling** of projects and **central procurement** by Cyprus Energy Agency
- Collaboration with Ministry of Education with potential to **reach out to all 700 schools**
- <https://www.cea.org.cy/en/pedia/>

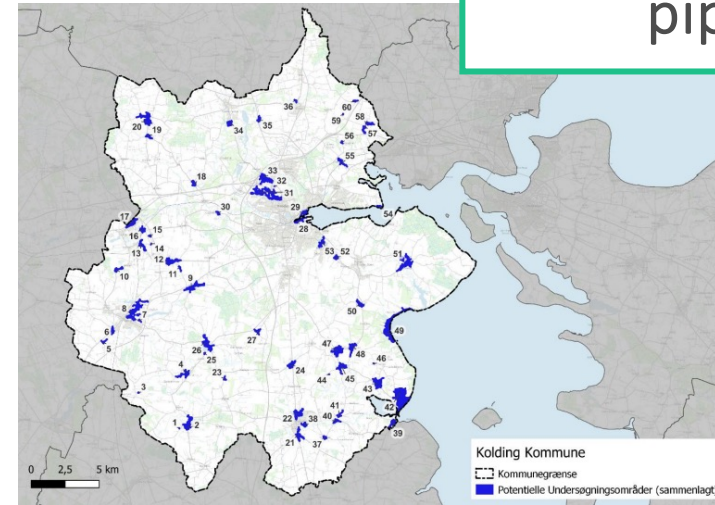
#launch investment pipelines



COHEAT2 - Enabling South-Denmark Climate Ambition

#launch investment
pipelines

- **LIFE PDA**
- **Green heating** (individual heat pumps, local microgrids, district heating) and **energy renovation**
- Coordination by the **Region of South-Denmark**
- 7 municipalities + replication in 15 others
- **EUR 31,9m** investments (for EUR 1.5m EU funding)



Examples of previous PDA projects

- **Horizon 2020:**

- <https://cordis.europa.eu/>

- **LIFE:**

- Call 2021: <https://europa.eu/!XTMXrt>
- Call 2022: <https://europa.eu/!YPM4Gy>



Keep in touch with us

Any questions on CET call topics? Email us on:
CINEA-LIFE-CET@ec.europa.eu



https://cinea.ec.europa.eu/life_en



[LIFE Programme](#)



[@LIFEprogramme](#)
[@CleanEnergy_EU](#)



[LIFE Programme](#)



[LIFE Programme](#)



[@LIFEprogramme](#)



European
Commission

Thank you very much!



© European Union 2022

Unless otherwise noted the reuse of this presentation is authorised under the [CC BY 4.0](https://creativecommons.org/licenses/by/4.0/) license. For any use or reproduction of elements that are not owned by the EU, permission may need to be sought directly from the respective right holders.

