

The LIFE Programme

Climate Action



NATURE AND BIODIVERSITY



CLEAN ENERGY TRANSITION

4

sub-programmes



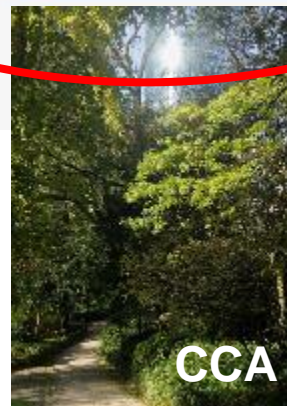
CLIMATE CHANGE MITIGATION AND ADAPTATION



CIRCULAR ECONOMY AND QUALITY OF LIFE



CCM



CCA



GOV



Climate Change Mitigation

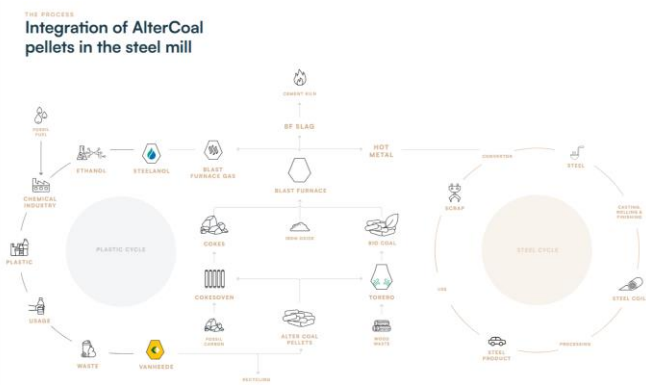
F-Gases



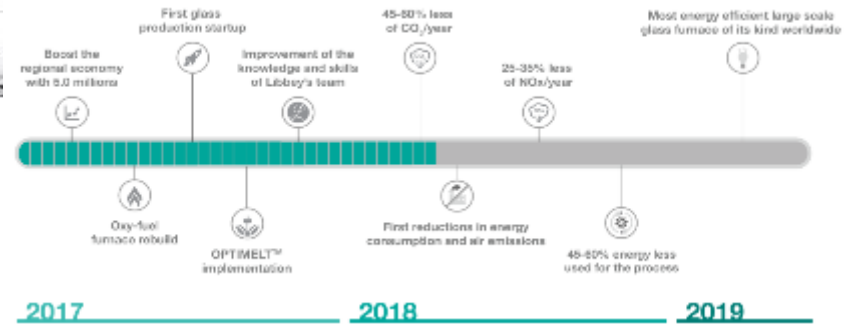
Climate Change Mitigation

Energy Intensive Industries

Steel



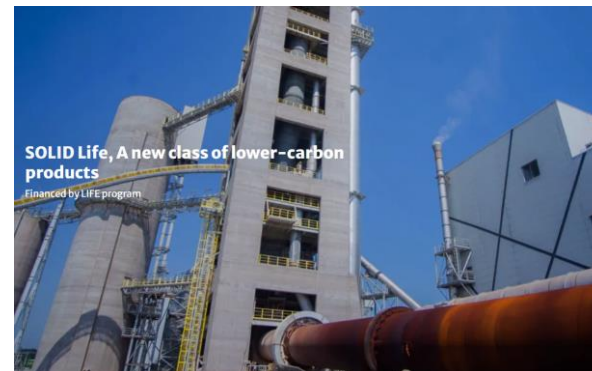
Glass



Ceramics



Cement



Climate Change Mitigation



Land and sea management practices



Priorities Climate Change Mitigation

#	Scope
1	Actions to reduce greenhouse gas emissions in the sectors not covered by the EU Emissions Trading System , including the reduction of use of fluorinated greenhouse gases and ozone-depleting substances.
2	Actions which enhance the functioning of the Emissions Trading System and which have an impact on energy and greenhouse gas intensive industrial production
3	Increase the generation and use of renewable energy and improvement of energy efficiency (as far as not covered by specific calls under the Clean Energy Transition sub-programme)
4	The development of land and sea management practices which have an impact on emissions and removals of emissions, conservation and enhancement of natural carbon sinks



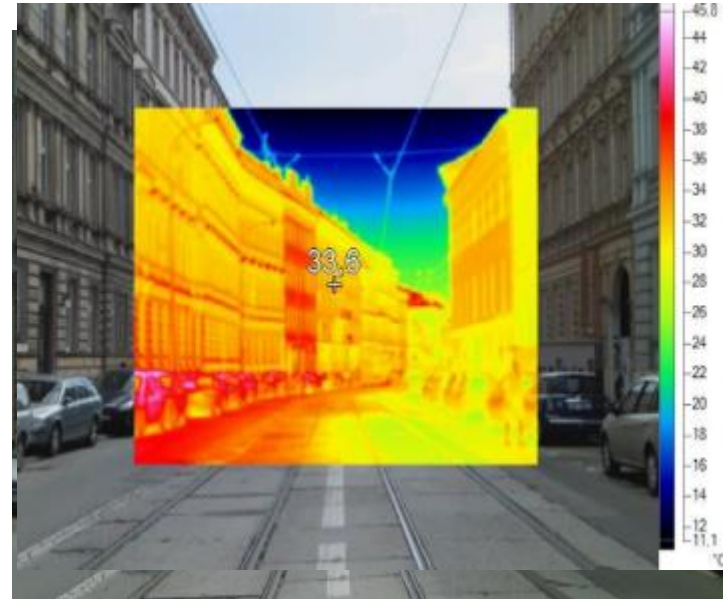
Climate Change Adaptation

LIFE HEROTILE



Foto: EDP Ecolis, Warszawa, PL

LIFE TREECHECK/ LIFERADOMKLIMA

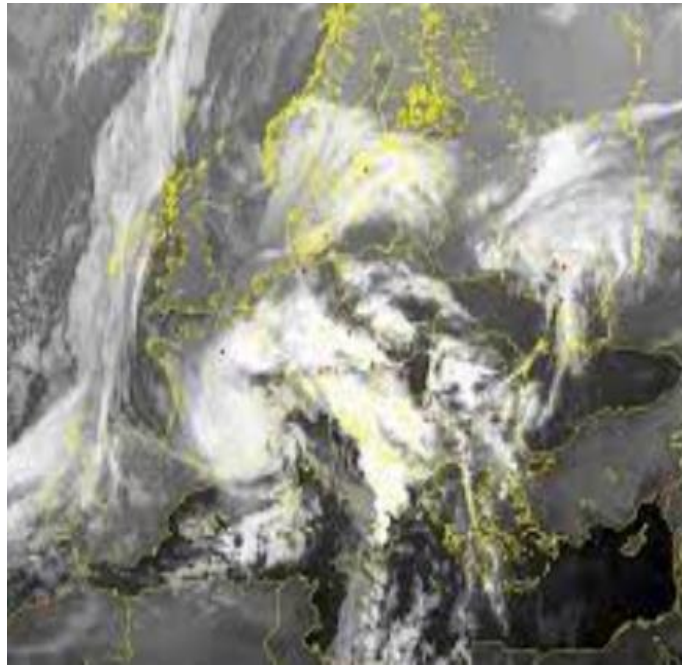


Urban Heat Island

Droughts



Climate Change Adaptation



Tornado



Forests dieback

LIFE VAIA



LIFE FORECCAst



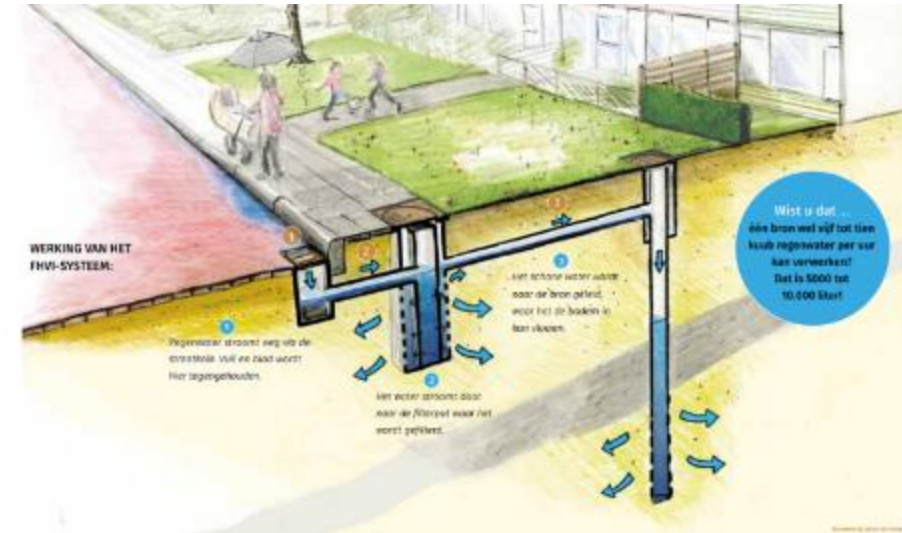
Climate Change Adaptation



Floods and heavy rains



LIFE AERFIT




STONEWALLS FOR LIFE

LIFE climate change adaptation & EU Mission

180 Local authorities receiving LIFE funding:

200 Mio EUR investments /
100 Mio EUR EU funding

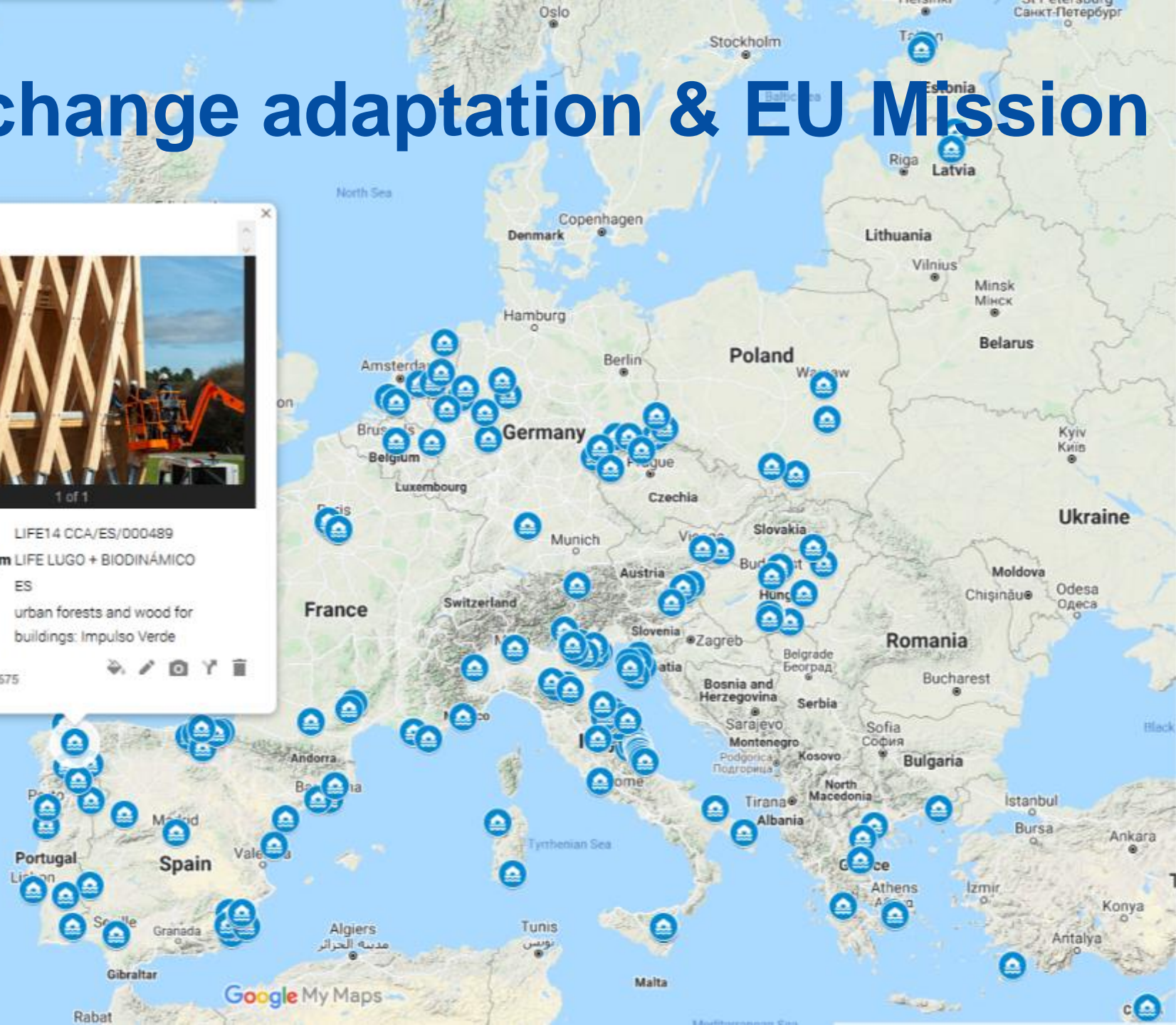
Lugo



1 of 1

Proposal N°	LIFE14 CCA/ES/000489
Proposal Acronym	LIFE LUGO + BIODINÁMICO
Country	ES
Measures	urban forests and wood for buildings: Impulso Verde

43.00973, -7.55675



Priorities Climate Change Adaptation

#	Scope
1	Adaptation policy development , and adaptation strategies and plans
2	State-of-the art tools and solutions for adaptation
3	Nature-based solutions in the management of land, coasts and marine areas
4	Adapting cities and regions to climate change
5	Climate-proofing and resilience of infrastructure and buildings
6	Adaptation solutions for farmers, forest managers, Natura 2000 managers and other land managers
7	Water management
8	Preparedness for extreme weather events
9	Financial instruments , innovative solutions and public-private collaboration on insurance and loss data



Climate Change Governance

GOV -Transport emissions



GOV - EU ETS



GOV – Floods prevention



Priorities Climate Change Governance

Scope and areas of intervention

Support to the operation of the European Climate Pact	Implementation/further development of national 2030 climate and energy strategies plans and/or long-term strategies
Incentivising behavioural change , mainstream emission reduction and resource and energy efficiency actions	Development and implementation of greenhouse gas accounting and climate change mitigation in the land use sector
Awareness-raising activities addressing adaptation and mitigation needs	Assessment of the functioning of the EU ETS
Activities linked to the development and implementation of the Sustainable Finance actions	Building capacity, raising awareness among end-users and the equipment distribution chain of fluorinated greenhouse gases
Greenhouse gas emission monitoring and reporting	Climate policy monitoring, assessment and ex-post evaluation
Support to the operation of the European Climate Pact	Implementation/further development of national 2030 climate and energy strategies plans and/or long-term strategies
Incentivising behavioural change , mainstream emission reduction and resource and energy efficiency actions	Development and implementation of greenhouse gas accounting and climate change mitigation in the land use sector



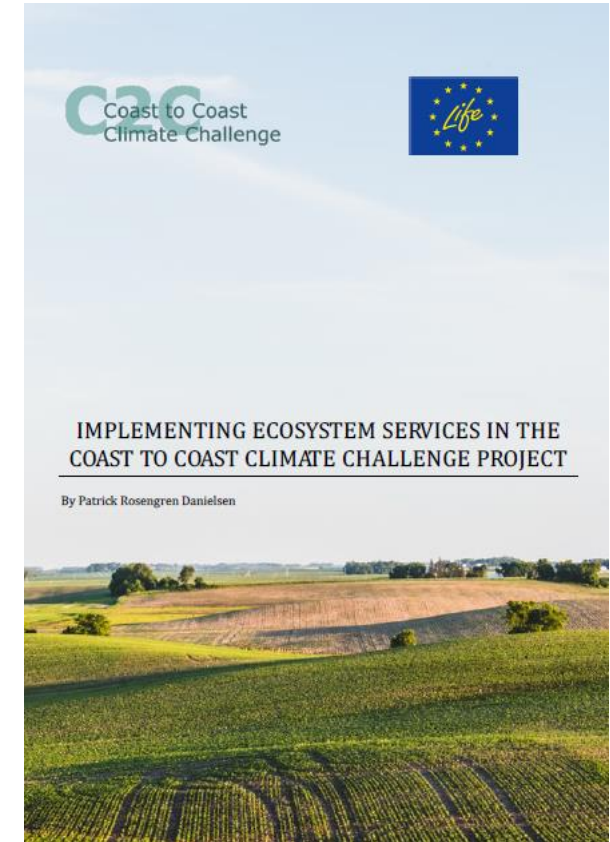
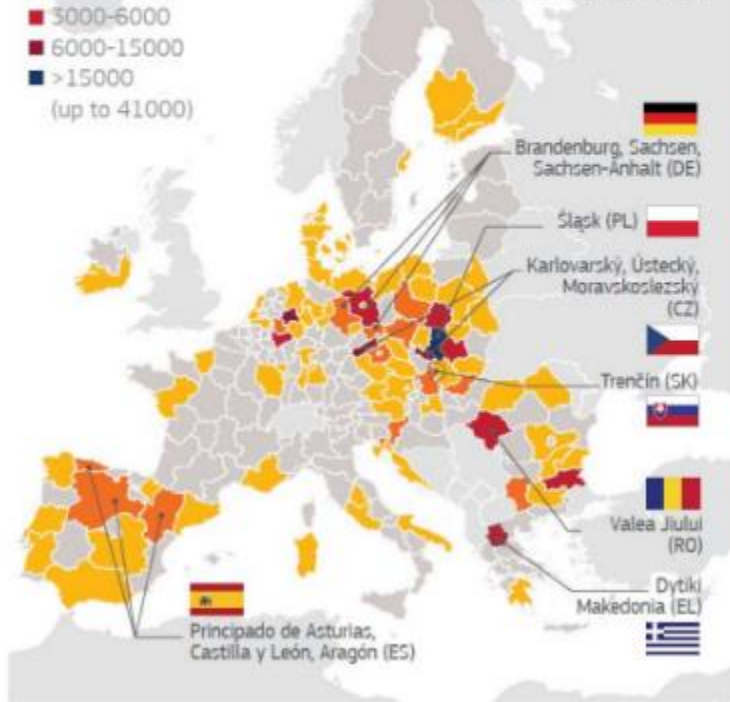
Strategic Integrated Projects

EU planning well ahead for the transition in coal regions

Potential job losses in EU27
Unit 2030 (cumulative)

- <1000
- 1000-3000
- 3000-6000
- 6000-15000
- >15000
(up to 41000)

EU support for transition in 13 coal regions is underway



INFRASTRUCTURE



PILOT FLEET



SERVICES

