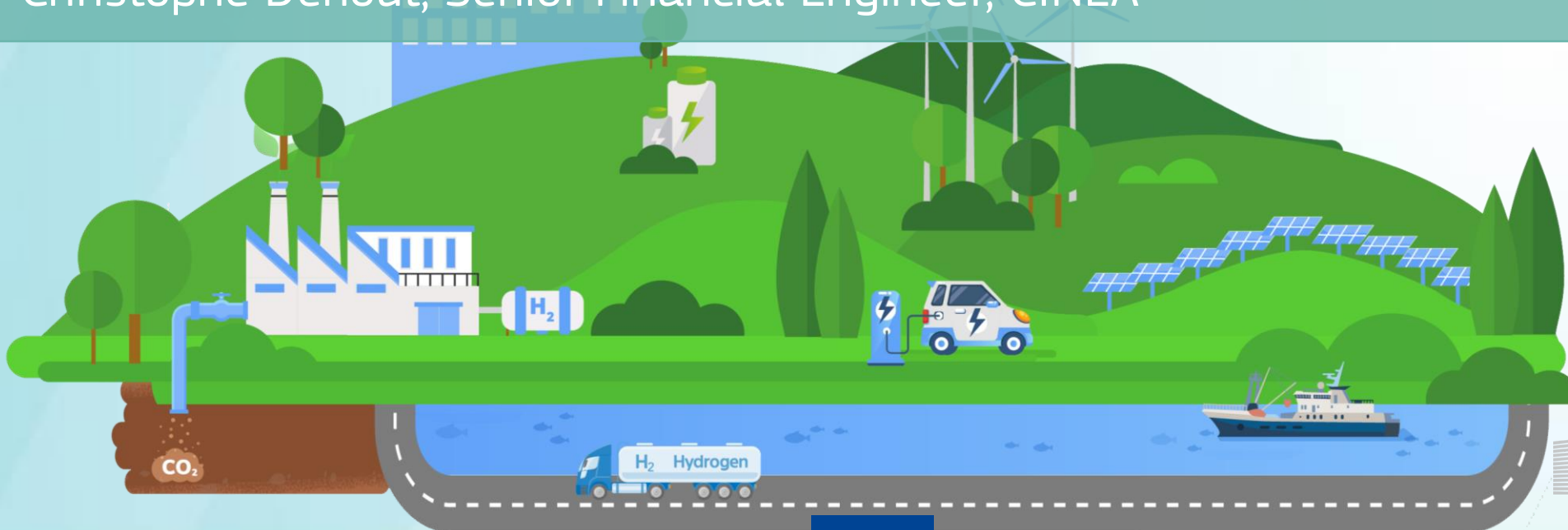


Innovation Fund

Call for small-scale projects 2021

Award criteria - Cost efficiency

Christophe Dehout, Senior Financial Engineer, CINEA



Cost efficiency

Requested Innovation Fund grant

Absolute GHG emission avoidance

During 10 years after entry into operation

Maximum grant is 60% of total relevant costs

Applicants choosing not to apply for the maximum grant will be more competitive when ranked against other applicants in 'cost per unit performance' metric. However if the project will receive project specific state-aid, this must be added to the requested IF grant amount in the numerator of the formula (*)

New

() provided that if the sum of the requested IF grant and project-specific state aid exceeds 60% of the relevant costs, the numerator of the cost efficiency ratio must be capped at 60% of relevant costs*

Cost Efficiency

Relevant costs = total capital expenditure (CAPEX) of the project

(e.g. construction costs, site infrastructure; development costs; intangible assets)

However are excluded from relevant cost :

- Land lease cost
- VAT
- Cost without any direct link with the project
- Insurance premium
- Capitalised financing cost
- Demolition cost of previously existing infrastructure, cost of stranded assets or for the replacement of existing technologies or assets
- Cost of corporate reorganisation

Min. of € 2.5M and max of €7.5M CAPEX

CAPEX to be certified by independent auditor during grant agreement negotiation

It is mandatory to fill in the sheet Relevant Cost Calculation in the Financial Information file

Project Development Assistance

Which projects
can benefit from
PDA?

- Rejected proposals that reach the minimum thresholds under degree of innovation and GHG emissions criteria
- Are awarded at least 50% points under each of project maturity sub-criteria
- Are considered by evaluators as having potential to improve their maturity with PDA
- Are confirmed by the EIB as shortlisted projects for the PDA

How does it
work?

- The PDA support consists of the **EIB expert services** for further development of projects
- Managed separately under project - specific contract with the EIB
- **Up to 20 projects** could benefit from the PDA in this call