

LIFE PACT

COVENANT OF MAYORS INVESTMENT FORUM ■ ENERGY EFFICIENCY FINANCE MARKETPLACE

18th October 2022



leuven



A brief summary of PACT

- ◆ People-Driven: Adapting Cities for Tomorrow
 - ◆ An integrated approach to urban climate change adaptation (CCA):
 - ◆ multiple stakeholders: local government, citizens, universities, and private actors
 - ◆ focus on both public and private property
- ⇒ more effective deployment of NBS
1. Across several pilot and replication sites;
 2. Develop and test a replicable method for engaging citizens;
 3. Develop and test a replicable method for engaging local stakeholders;
 4. Improve the knowledge base by developing a digital tool to facilitate, track, and analyze the uptake of NBS in citizens' private outdoor spaces.



€ 3.944.564,00



Oct 21 – aug 2025

Partners

- ◆ Cities

- ◆ Leuven = Coordinating beneficiary
- ◆ Madrid
- ◆ Kraków

- ◆ Supporting partners

- ◆ Katholieke Universiteit Leuven,
- ◆ Universidad Politécnica de Madrid
- ◆ Democratic Society,
- ◆ Dark Matter Laboratories
- ◆ Leuven 2030
- ◆ Zorg Leuven



Leuven

Facts and figures

- **Province:** Flemish Brabant-Brabant
- **Surface are:** 56,63 km²
- **Residents:** 101.072 – 160 nationalities
- **Climate ambitions:** 100 Climate-Neutral & Smart cities



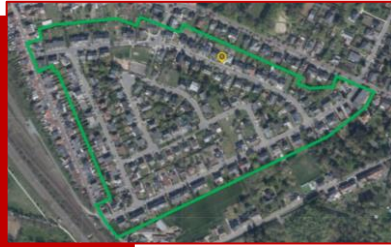
The Life Pact project (LIFE20 CCA/BE/001710) receives funding by the Life program of the European Union.



Role of Leuven in Pact

- 2 Pilot locations

**Citizens:
Spaanse Kroon**



**Stakeholders:
Ter Putkapelle**



Digital tool



**Methodology
Implementation NBS
(citizens /stakeholders)**

Replication sites

**Replication in 2 other
neighbourhoods**

**Replication in 2 other sites
Zorg Leuven**

Replications in Madrid

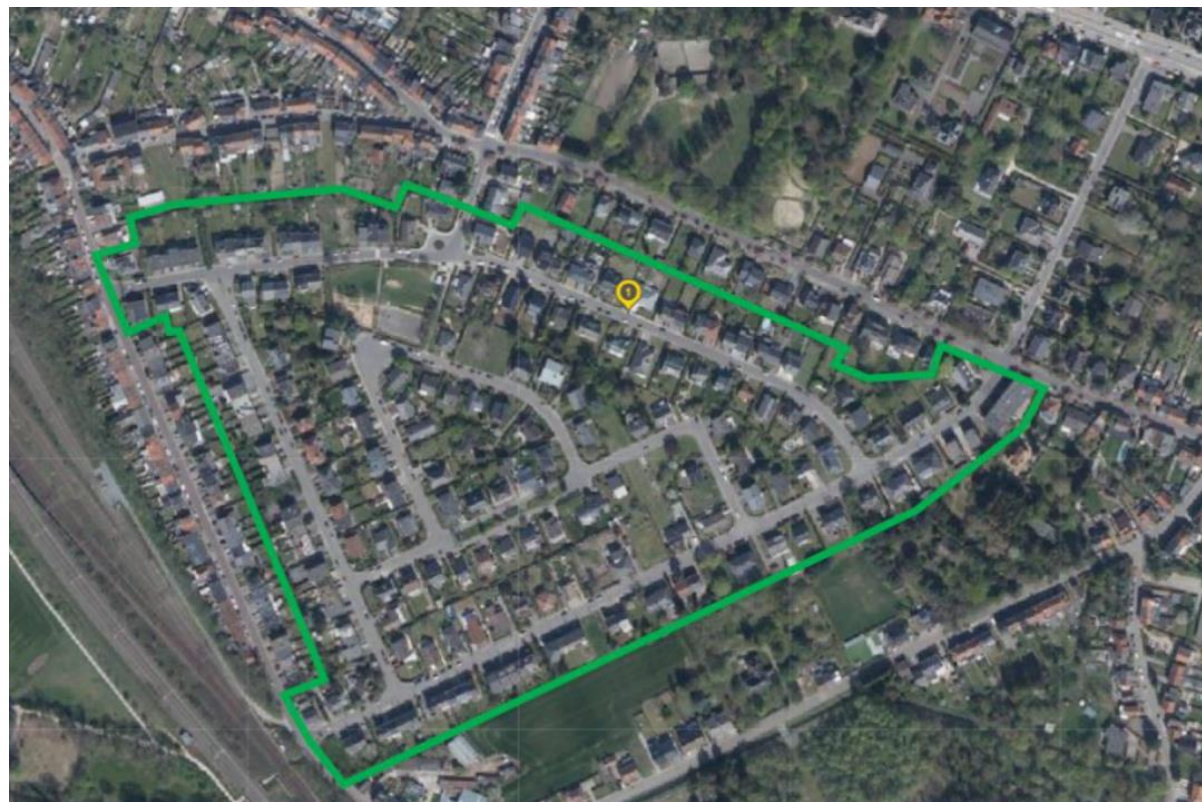
Replications in Krakau

Pilot 1: Citizens – Spaanse Kroon



Discript 'Spaanse Kroon'

- ±550 citizens
- 250 housing units
 - ◆ mainly detached houses
 - ◆ some apartments
- Quiet neighbourhood
- Mix of old & young people
- Many opportunities in public space (wide streets) and private space (gardens, driveways)

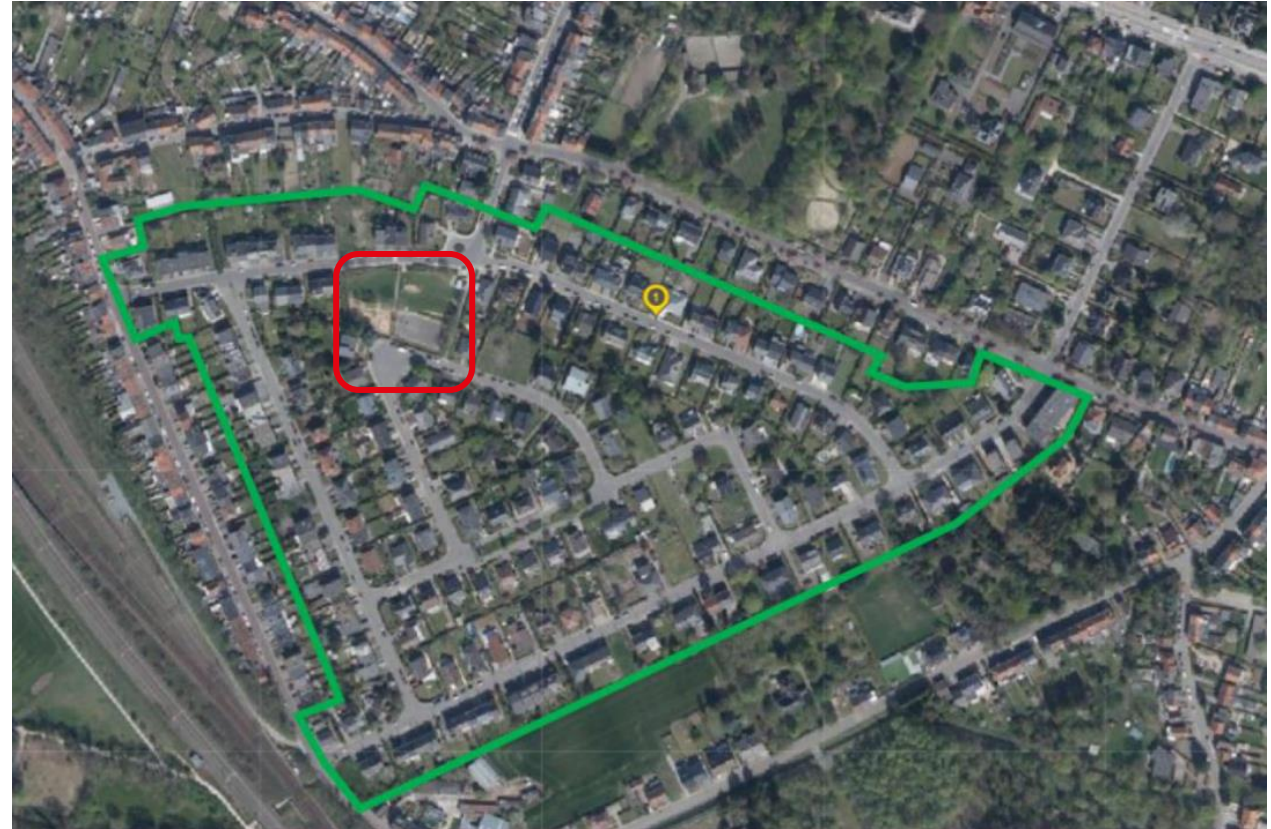


The Life Pact project (LIFE20 CCA/BE/001710) receives funding by the Life program of the European Union.

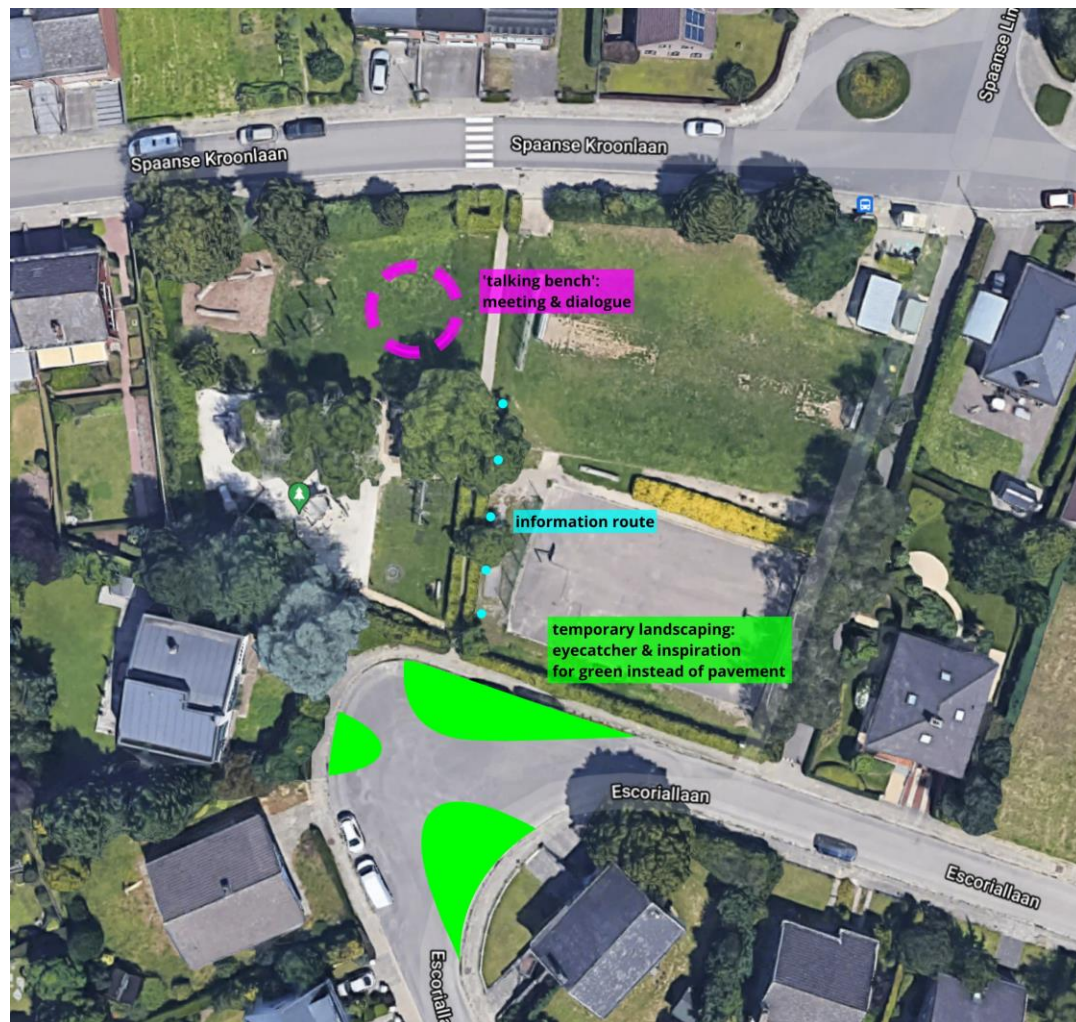


Participation process

- Multiple meetings to collect input
 - Open/informal setting, citizens get to know each other better
 - Working with what's really going on in the neighbourhood
- Outdoor location in district itself as the heart of the participation process

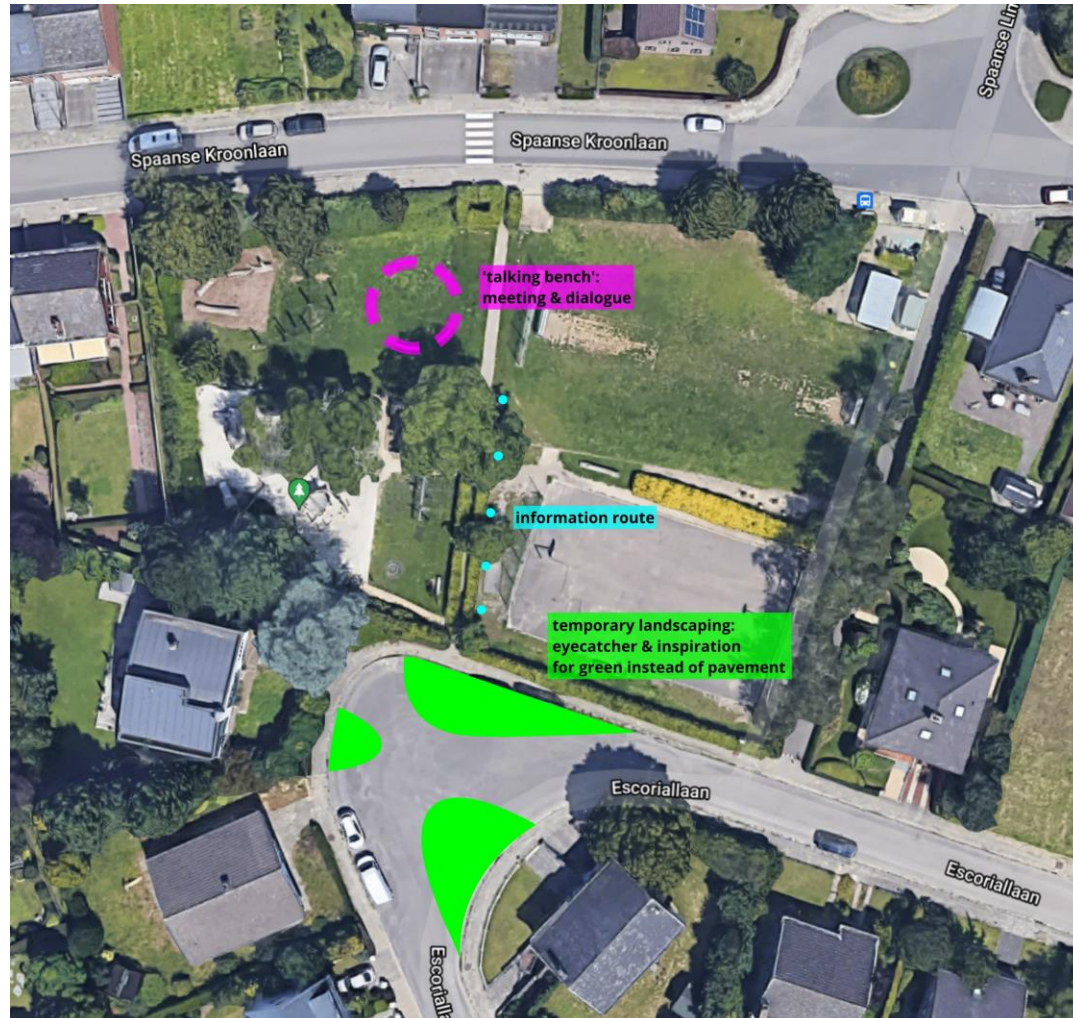


Participation location



- **Information**
about process and NBS

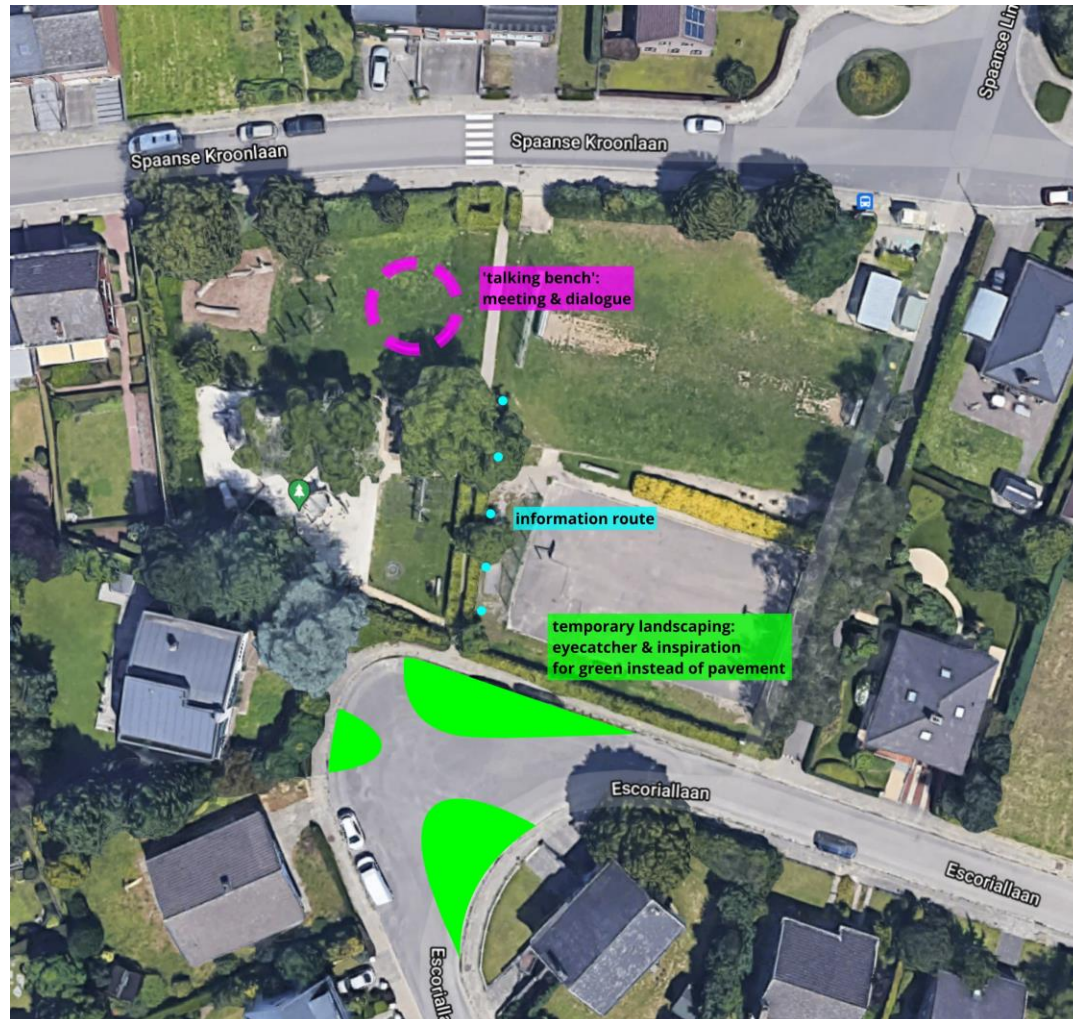
Participation location



- **Information**
about process and NBS
- **Temporary green in the street**
as physical inspiration and eyecatcher



Participation location



- **Information**
about process and NBS
- **Temporary green in the street**
as physical inspiration and eyecatcher
- **'Babbelbank' ('Talking bench')**
for dialogue moments
circular (shape & use)



Participation location



Participation process

- At least 3 dialogue moments about **public space**
 - ▶ Create **support base**
 - ▶ Custom made **design**
- At least 3 dialogue moments about **private space**
 - ▶ **Stimulate** citizens to take (collective) actions themselves
 - ▶ Custom made **action plan**



Spaanse Kroon

Participation

■ Introduction market

- ◆ **Information** about process & NBS
- ◆ **Dialogue** about general opportunities and sensitivities in the neighbourhood
- ◆ Call for cooperation to **monitor** indicators
- ◆ **Informal** aspect:
 - ▶ DIY workshop for kids (bird house or bee hotel)
 - ▶ Educational material
 - ▶ Snacks & drinks



**HIER DRINGT
HET DOOR**
Spaanse Kroon

Kom naar de kennismakingsmarkt

woensdag 23 maart 2022 | 16 tot 19 uur
Speelplein van de Spaanse Kroon
(Escoriallaan)



Spaanse Kroon

Monitoring with KU Leuven

- Combination sensors & observations (Leuven.cool)
 - ◆ Temperature
 - ◆ Humidity
 - ◆ Soil
 - ◆ Water usage
 - ◆ Bio diversity
 - ◆ ...
- ◆ Baseline survey
 - ◆ knowledge, support,...



28. ...om te bewegen (bv. wandelen).
 29. ...om samen te zijn met andere mensen.
 30. ...om in de natuur te zijn.

Ik investeer veel tijd...
 31. ...in het klimaatvriendelijk maken van de inrichting van mijn tuin.
 32. ...in klimaatvriendelijk tuinieren in mijn tuin.

Helemaal niet-ees	Niet-ees	Neutraal	Eens	Helemaal eens
<input type="checkbox"/>	<input type="checkbox"/>	<input type="checkbox"/>	<input type="checkbox"/>	<input type="checkbox"/>
<input type="checkbox"/>	<input type="checkbox"/>	<input type="checkbox"/>	<input type="checkbox"/>	<input type="checkbox"/>
<input type="checkbox"/>	<input type="checkbox"/>	<input type="checkbox"/>	<input type="checkbox"/>	<input type="checkbox"/>
<input type="checkbox"/>	<input type="checkbox"/>	<input type="checkbox"/>	<input type="checkbox"/>	<input type="checkbox"/>

BIJKOMENDE INFO

Wat is je opleidingsniveau?

<input type="checkbox"/> geen of lager onderwijs	<input type="checkbox"/> hoger niet-universitair onderwijs van het korte type
<input type="checkbox"/> lager secundair onderwijs	<input type="checkbox"/> universitair of hoger universitair onderwijs van het lange type
<input type="checkbox"/> hoger secundair onderwijs (algemeen vormend)	<input type="checkbox"/> postuniversitair onderwijs
<input type="checkbox"/> hoger secundair onderwijs (beroep/technisch)	

Kan je nu inschatten hoeveel het netto maandelijks inkomen van je huishouden per maand bedraagt (bv. samenleven en elkaar economisch ondersteunen)?
 Onder het huishouden verstaan we alle mensen die tot een woongemeenschap of gezin behoren.

0 euro
 1 - 500 euro
 500 - 1000 euro
 1000 - 1500 euro
 1500 - 2000 euro
 2000 - 2500 euro
 2500 - 3000 euro
 3000 - 5000 euro
 > 5000 euro

DANKJEWEL!
 Bedankt om deel te nemen aan onze bevestiging. Bezorg ons de ingevulde vragenlijst ten laatste 22 maart via de briefbus van busstopte De Bron (Oudebaan 37) of in de enquêtebus bij Apotheek Spaanse Kroon (Oudebaan 40).

Rinnemart volgt er meer informatie over het volledige traject in de wijk. Hou dus je briefbus in de gaten.

Vragen?
 Dienst Gebiedsgenete Werking
 Professore Wijk Overstroomingen 1, 3000 Leuven
 016 27 26 51 | wijkmanagement@leuven.be



Public domain

Design streets and pavements



leuven



Public domain

small



medium



large



Current situation



Small



Small



Extra:

- Planting area's
- Greening of parking spaces

Medium



Medium



Extra:

- Removing 1 sidewalk
- One-way streets
- Large planting area's
- Greening of parking spaces

Large



Large



Extra:

- Removing both sidewalks
- Installing concept “woonerf” – “Home zone”
 - Shared space (pedestrians, cyclists & cars)
 - max 20 km/h
- One-way streets
- Large planting area's
- 85 extra trees
- Greening of parking spaces
- Preliminary design → <https://leuven.be/vergroenenspaansekroon>

Private domain

Gardens & drive-ways



leuven



Private domain (gardens & drive-ways)

■ Goals

- ◆ Inform, inspire through “NBS recipes” – cookbook KU Leuven
- ◆ Collective actions in an informal setting (eg break out weekend, planting weekend)
 - ▶ Garden rangers
 - ▶ City grants
- ◆ Strengthen social cohesion by working together towards a common goal
- ◆ Bundling our forces
 - ▶ City: process support & coordination, practical support
 - ▶ Citizens: bundling capacities in the neighbourhood, many small actions have a big impact
 - ▶ Partners: infrastructure works in public space, support private actions with advice and practical help



WAT?

Denk aan een twee-sporenoprit of een infiltrerend tuinpad.

WAAROM?

- Meer ontharding zorgt voor minder wateroverlast, minder hinder door droogte en minder hitte in een stedelijke omgeving.
- Meer groen zorgt voor meer biodiversiteit.

HOE?

- Zoek bij ontharding naar een balans tussen comfort en ecologie.
- Gebruik uitgedragen verharding opnieuw in de vorm van grind, muurtjes en bloembakken.

 leuven |  KU LEUVEN | Meer tips via mijntuinlab.be



Private domain (gardens & drive-ways)

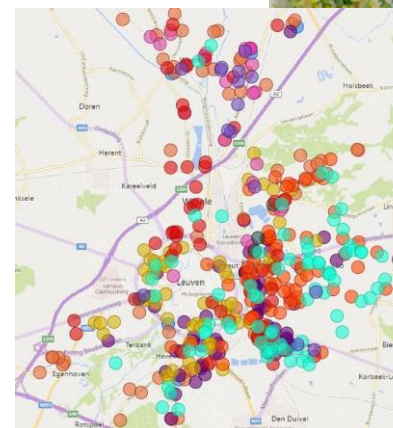
Supporting residents with implementation

- Personal garden advice Garden rangers →
- Joint purchasing of planting material
- Collective planting day
- Cooperation with ecological gardening contractors
- Financial support through grants

Encourage residents through promotional communication

- Neighborhood challenges & rewards

- Free advice on request
- Tailor-made for individual gardens or some adjoining gardens
- Focus on climate friendly – biodiverse gardens



Private domain (gardens & drive-ways)

Supporting residents with implementation

- Personal garden advice Garden rangers
 - Joint purchasing of planting material →
 - Collective planting day
 - Cooperation with ecological gardening contractors
 - Financial support through grants
- Resident purchases this individually
 - City gives € 25 extra discount
 - Delivery by green department

Encourage residents through promotional communication

- Neighborhood challenges & rewards



Private domain (gardens & drive-ways)

Supporting residents with implementation

- Personal garden advice Garden rangers
- Joint purchasing of planting material
- **Collective planting day** →
- Cooperation with ecological gardening contractors
- Financial support through grants

Encourage residents through promotional communication

- Neighborhood challenges & rewards

- **City organizes** and coordinates planting day
- **Local contractor** provides professional help with **advice and assistance**
- Containers and **tools are provided by the city** (e.g. digging crane)
- **Neighbours can help each other**



Private domain (gardens & drive-ways)

Supporting residents with implementation

- Personal garden advice Garden rangers
- Joint purchasing of planting material
- Collective planting day
- Cooperation with ecological gardening contractors →
- Financial support through grants

- During information event, **gardening contractors** selected by the city can present their services to residents.
- Focus on removal hard surfaces (driveway's,...) – climate adaptive gardening
- Residents enter **individually and directly** into an agreement with the company of their choice.

Encourage residents through promotional communication

- Neighborhood challenges & rewards



Private domain (gardens & drive-ways)

Supporting residents with implementation

- Personal garden advice Garden rangers
- Joint purchasing of planting material
- Collective planting day
- Cooperation with ecological gardening contractors
- Financial support through grants →

Encourage residents through promotional communication

- Neighborhood challenges & rewards

Planting trees

- Tree in front yard: €75

Replacing paving by living greenery

- Revegetation and greening in front of the house ($\geq 5\text{m}^2$): €10 to 20/ m^2
- Revegetation ($\geq 10\text{m}^2$): €5/ m^2
- Green roof ($\geq 5\text{m}^2$): €25 to 35/ m^2

Retain and reuse rainwater

- Rainwater barrel (≥ 200 liters): €100
- Rainwater pit (≥ 5000 liters): €500
- Infiltration pit/tube: €300
- Wadi: €350

Private domain (gardens & drive-ways)

Supporting residents with implementation

- Personal garden advice Garden rangers
- Joint purchasing of planting material
- Collective planting day
- Cooperation with ecological gardening contractors
- Financial support through grants

Encourage residents through promotional communication

- Neighborhood challenges & rewards →



A form of 'gamification' stimulates residents to take action and to encourage each other.

Can you manage to...?

...plant x indigenous trees?

... replace x m² of paved surfaces with living greenery?

...capture and reuse x liters of rainwater?

Residents are rewarded depending on the collective result achieved. Individual choice between rewards through local partners. (e.g. tickets to museum, football,...)

Nature Based Solutions

Practices to help them spread

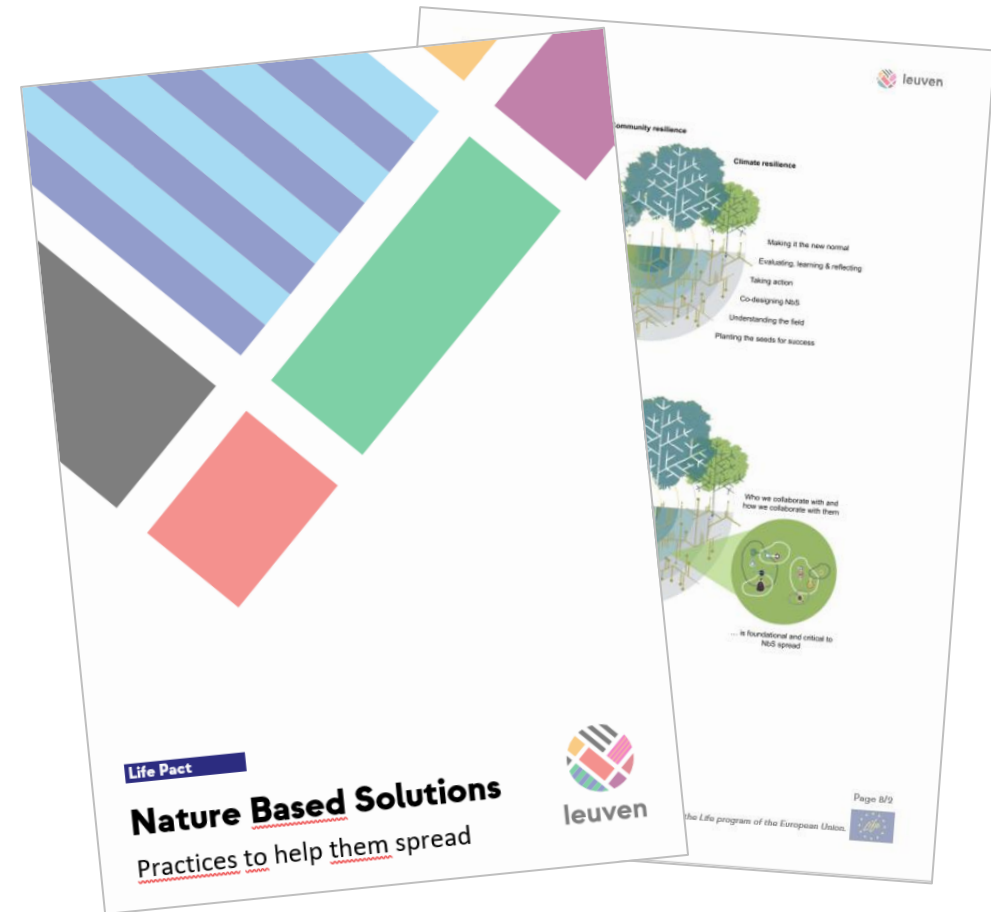
(Replicable model – draft version)



Nature Based Solutions

Practices to help them spread

- a guide to NBS 'Practices'
 - ◆ ingredients for cities to 'spread' (implement) NBS
 - ◆ aimed at:
 - ▶ civil servants working in local government
 - ▶ civil society organizations
 - ▶ community building professionals
 - ▶ democracy innovation practitioners
 - ▶ NBS experts
 - ▶ ...



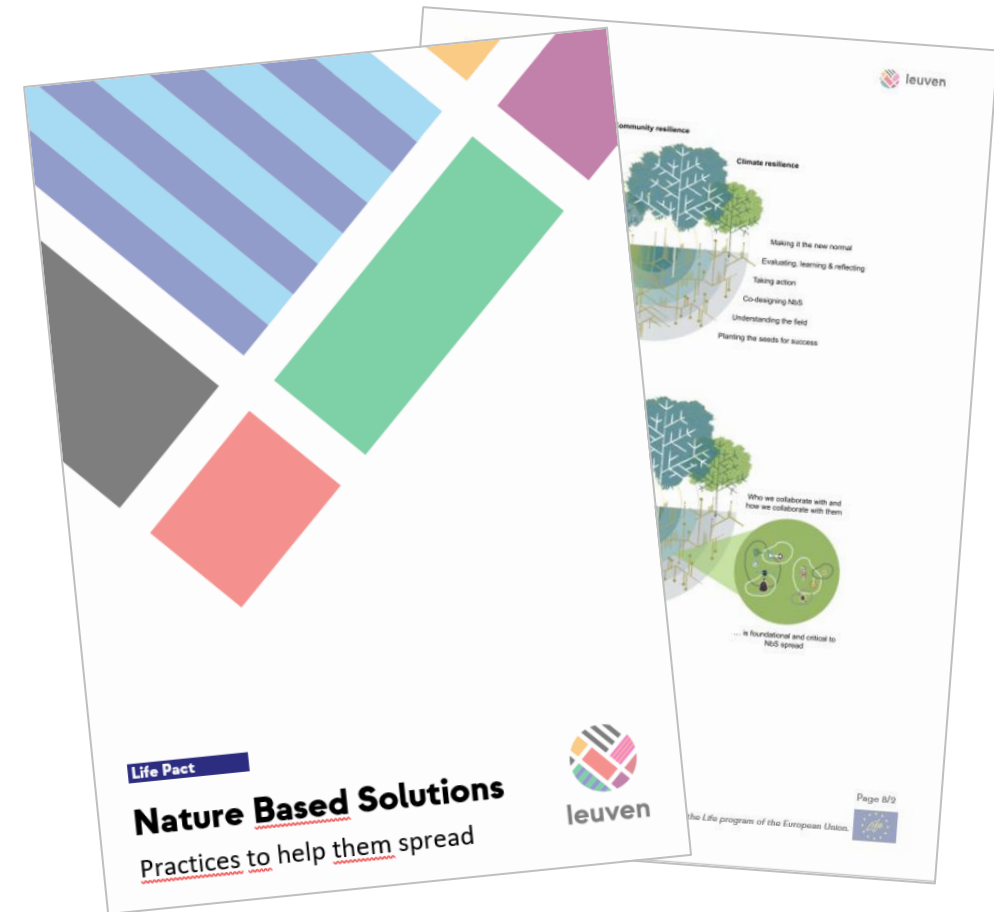
Nature Based Solutions

Practices to help them spread

- 6 Practices present different angles on spreading NBS



- First - preliminary – version online
 - ◆ <https://leuven.be/en/participation-hub>



Questions?



- [Lifepact.eu](https://lifepact.eu)
- [Newsletter](#)
- Pact@leuven.be
- Baptist.vlaeminck@leuven.be



Thanks!

Lifepact.eu

Baptist.vlaeminck@leuven.be



leuven

The Life Pact project (LIFE20 CCA/BE/001710) receives funding by the Life program of the European Union.

