



LIFE-2024-CET-ENERCOM

Developing support mechanisms for energy communities

LIFE CET Info Day, 25th of April 2024



Talia BRUN MARCEN , Project Adviser
LIFE Energy + LIFE Climate, CINEA

Energy communities

- Speed up the uptake of renewables and energy efficiency measures by mobilising private capital
- Deliver local economic benefits, social cohesion
- Be a tool to increase the flexibility of the market through demand response and storage
- Increase public ownership of the energy transition

Renewable energy
communities

Citizen energy
communities



Collaboration between Local Authorities & ECs

A. Set up energy communities led by or supported by relevant public authorities

B. Develop support services for energy communities





Approach

Concept and methodology based on a barrier analysis for each pilot area at proposal stage

Activities related to sustainable energy

Priority will be given to proposals that develop areas in which community energy is less developed

Possible actions

Technical support

- licencing
- commercialisation
- business models
- legal aspects
- access to finance

Other Measures

- pooling resources for project development and operation
- support measures for specific target groups (energy poverty)



Supportive local policy framework

- community participation/
- investment quotas
- public procurement

Training and Engagement

- capacity building for local and regional authority officials, local communities, etc.
- support of active engagement and democratic governance

Pilots

Justify the potential for synergies between the set of pilots selected

For each one:

- Demonstrate you have the support of the necessary stakeholders
- Show that it is additional and complementary

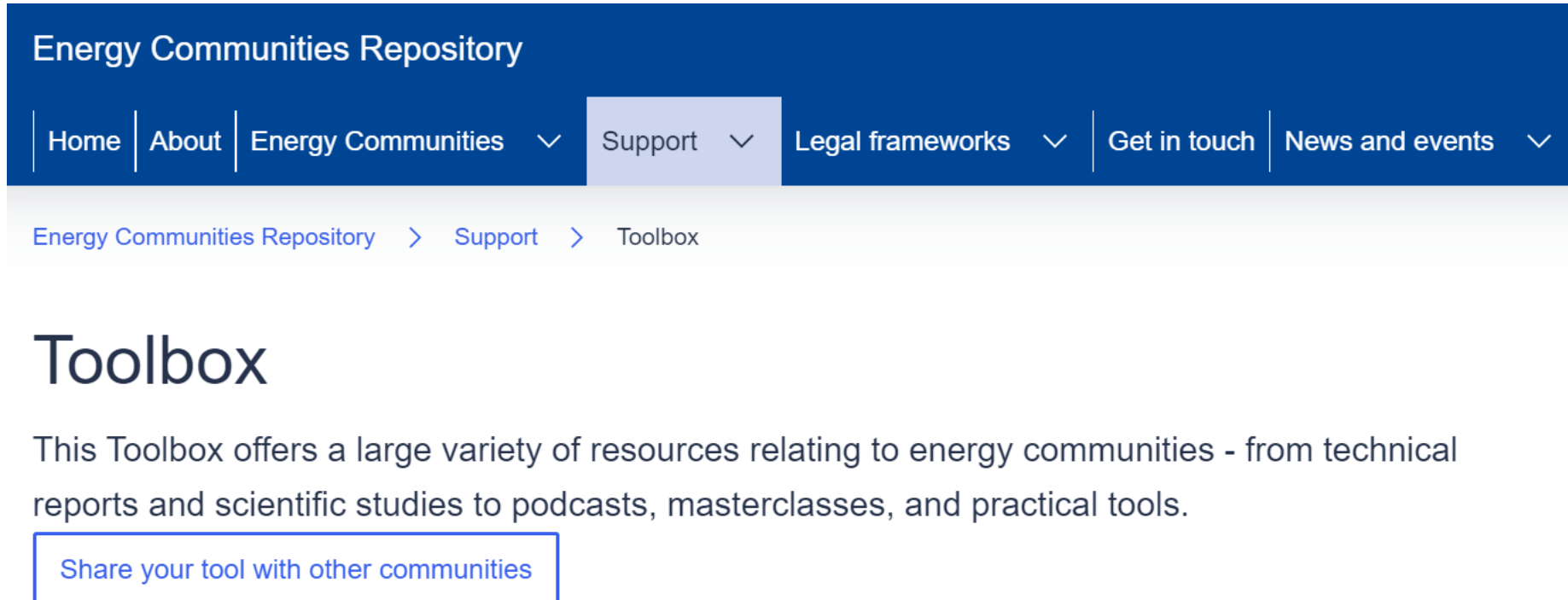




Tools and networks

- Make use of existing initiatives, networks and platforms as relevant and complement them
- Use, re-use, adapt the tools and resources which already exist
- Make sure you think about how to make your work available to others

Energy Communities Repository of tools



The screenshot shows the top navigation bar of the Energy Communities Repository website. The navigation bar is dark blue with white text. The main title 'Energy Communities Repository' is on the left. The navigation menu includes 'Home', 'About', 'Energy Communities' (with a dropdown arrow), 'Support' (with a dropdown arrow), 'Legal frameworks' (with a dropdown arrow), 'Get in touch', and 'News and events' (with a dropdown arrow). Below the navigation bar is a breadcrumb trail: 'Energy Communities Repository > Support > Toolbox'. The main heading 'Toolbox' is displayed in a large, dark font. Below the heading is a paragraph: 'This Toolbox offers a large variety of resources relating to energy communities - from technical reports and scientific studies to podcasts, masterclasses, and practical tools.' At the bottom of the screenshot is a blue-bordered button with the text 'Share your tool with other communities'.

Energy Communities Repository

Home | About | Energy Communities ▾ | Support ▾ | Legal frameworks ▾ | Get in touch | News and events ▾

Energy Communities Repository > Support > Toolbox

Toolbox

This Toolbox offers a large variety of resources relating to energy communities - from technical reports and scientific studies to podcasts, masterclasses, and practical tools.

Share your tool with other communities



A large cohort of projects



Impacts

- Baselines + Assumptions + Link to project action
- Topic specific impacts (where relevant) + LIFE CET common indicators
- During the project + within 5 years after the project lifetime



Topic specific impacts

of energy community projects supported

of energy communities created

of operational support services for energy communities

of citizens taking part in energy communities

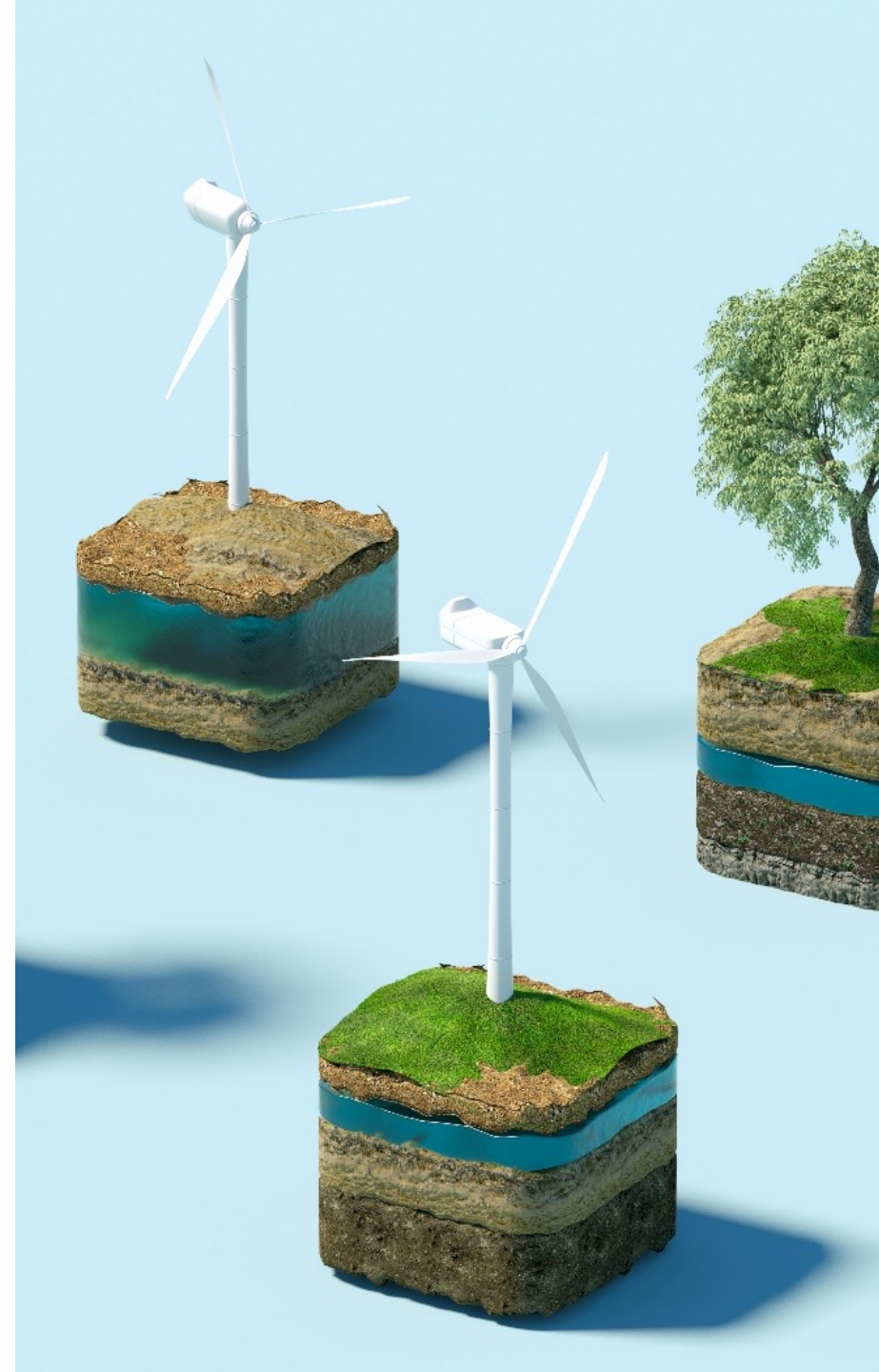
of actors with increased skills (type of actor)

local and regional authorities committed to replicate



LIFE CET indicators

- Primary **energy** and final energy savings triggered
- **Renewable energy** generation triggered
- **Investments** in sustainable energy triggered
- Reduction of **GHG emissions**



Get ready to apply!



Open for submissions: **18 April 24 – 19 September 24**

Available budget for the topic: **7 Million Euro**

Foreseen start of action : **Autumn 2025**

Co-financing rate: **95% maximum**

Topic text:



Some FAQs

Any questions?

CINEA-LIFE-CET@ec.europa.eu

What do you mean by pilots?

Pilots can be energy communities (A) or support services for communities (B).

Can I use existing tools but include some budget for adaptation and translation?

Yes

What if I focus on community heating and cooling and I know that the impacts will not materialize during the project action?

You should aim at achieving an investment decision by the end of the action. Then, you can account for future impacts (triggered).



We encourage you when completing and submitting your application form to proactively give access and request support from your LIFE National Contact Point



Keep in touch with us



https://cinea.ec.europa.eu/life_en



[LIFE Programme](#)



[@LIFEprogramme](#)
[@CleanEnergy_EU](#)



[LIFE Programme](#)



[LIFE Programme](#)



[@LIFEprogramme](#)



[LIFE Newsletter](#)
[Clean Energy Newsletter](#)

Thank you and good luck!



© European Union 2021

Unless otherwise noted the reuse of this presentation is authorised under the [CC BY 4.0](https://creativecommons.org/licenses/by/4.0/) license. For any use or reproduction of elements that are not owned by the EU, permission may need to be sought directly from the respective right holders.

Slide xx: **element concerned**, source: e.g. [Fotolia.com](https://www.fotolia.com/); Slide xx: **element concerned**, source: e.g. [iStock.com](https://www.istock.com/)

