



IN-PLAN

Integrated energy, climate and spatial planning

Path to a successful application in LIFE CET

Tomislav Novosel, REGEA

tnovosel@regea.org



Co-funded by the European Union under project ID101076428. Views and opinions expressed are however those of the author(s) only and do not necessarily reflect those of the European Union or CINEA. Neither the European Union nor the granting authority can be held responsible for them.


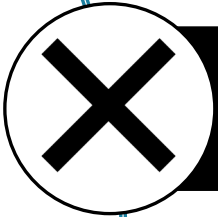


Basic info

- Call: LIFE21-CET-LOCAL-IN-PLAN
- Duration: 1/10/2022 - 31/03/2026
- Budget: 1,745,170.00 (1,657,908.00)
- Objective: Support local and regional governments in the implementation of energy and climate measures through integrated planning and capacity building

1. Understand the topic and the challenges you aim to address

- Identify real issues you aim to address – don't try to solve a problem you've invented
- Don't force the call to match your topic, if it isn't a natural fit look elsewhere
- Talk to your target audience before you spend resources on a doomed application

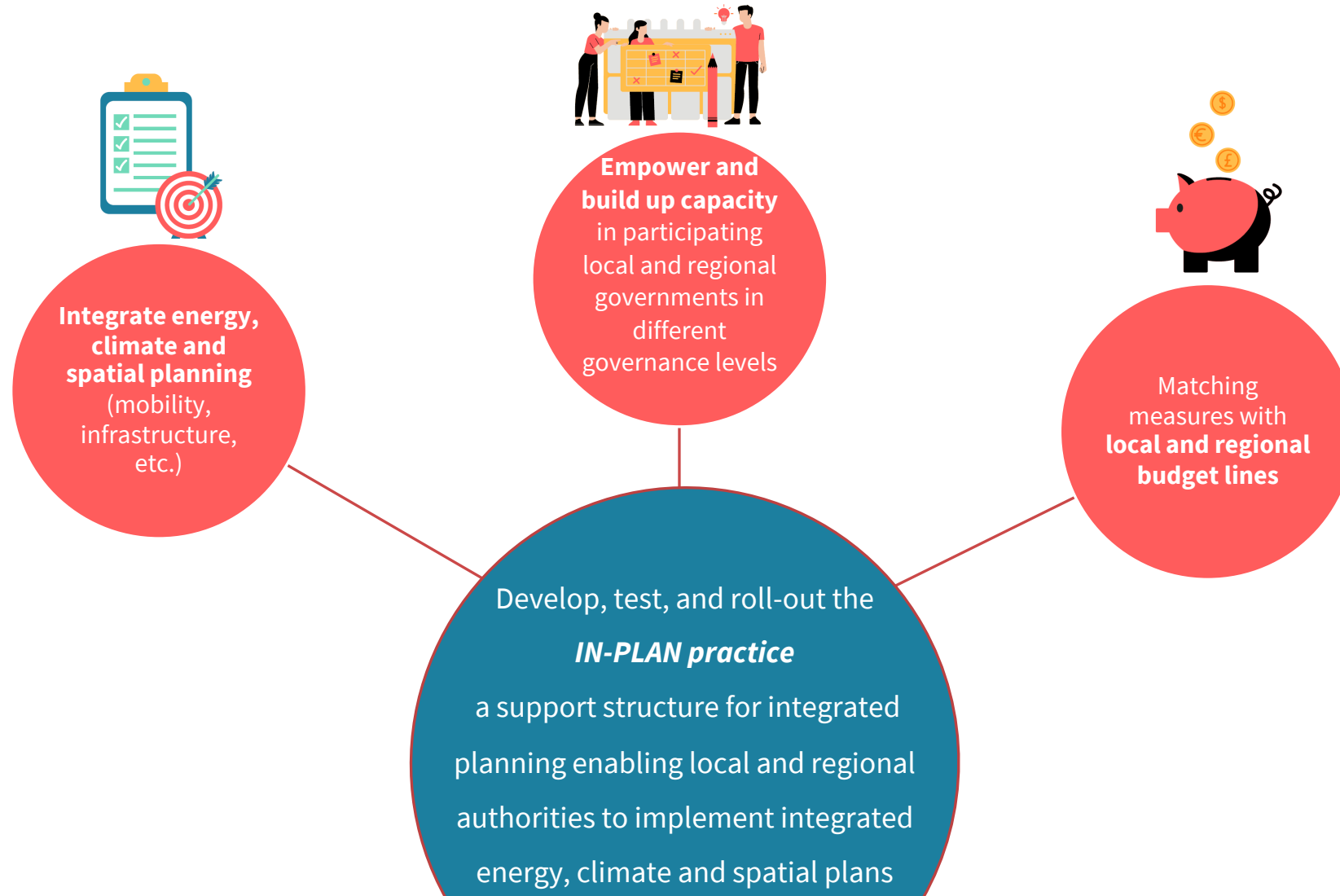
Challenges

-  **Lack of capacity and mechanisms to enact and enforce binding energy and climate policies on a local or regional level**
-  **Lack of vertical and horizontal integration or alignment of strategies, plans, and policies**
-  **Lack of a systemic, integrated, and consistent approach to energy and climate planning**
-  **Lack of alignment between planning and the allocation of financial resources**

2. Offer a real solution to the identified challenges

- Focus on real innovation or repplication of novel solutions to new sectors or territories
- Make sure what you propose is feasible and needed/wanted
- Investigate if what you are offering is already beeing done

IN-PLAN objectives



3. Match your consortium to the challenge at hand

- Select partner who can fill the gaps (capacity and territory) you have
- Chose a core wrighting team
- Pick partners you want to work with – the project will last several years
- Add multipliers if needed and possible



IN-PLAN

Integrated energy, climate and spatial planning



Co-funded by the European Union under project ID101076428. Views and opinions expressed are however those of the author(s) only and do not necessarily reflect those of the European Union or CINEA. Neither the European Union nor the granting authority can be held responsible for them.

3. Everything else

- Make sure you start early enough
- Use your resources wisely
- Follow the guidelines and guidance, use common sense
- Ask for help
- Align the project to your company profile
- In case you fail, use the received feedback and reapply



Thank you.

For more info, follow our hashtag, visit our website or contact us:



#LifeINPLAN



fedarene.org/project/in-plan/



tnovosel@regea.org



Co-funded by the European Union under project ID 101076428. Views and opinions expressed are however those of the author(s) only and do not necessarily reflect those of the European Union or CINEA. Neither the European Union nor the granting authority can be held responsible for them.